

## Recombinant Human ZG16 protein, His-tagged

**Cat. No.** ZG16-562H    **Lot. No.** (See product label)

### SPECIFICATION

<b>Product Overview</b>	Recombinant Human ZG16 protein(NP_689551.3)(1-167 aa), fused to His tag, was expressed in E. coli.
<b>Species</b>	Human
<b>Source</b>	E.coli
<b>ProteinLength</b>	1-167 aa
<b>Form</b>	The purified protein was Lyophilized from sterile PBS (58mM Na <sub>2</sub> HPO <sub>4</sub> , 17mM NaH <sub>2</sub> PO <sub>4</sub> , 68mM NaCl, pH7.). 5 % trehalose and 5 % mannitol are added as protectants before lyophilization.
<b>AA Sequence</b>	MLTVALLALLCASASGNAIQARSSSYSGEYGSGGGKRFSGNSGNQLDGPITALRVRV NTYYIVGLQVRYGKVVSDYVGGGRNGDLEEIFLHPGESVIQVSGKYKWLKLVFVT DKGRYLSFGKDSGTSFNAVPLHPNTVLRFISGRSGSLIDAIGLHWDVYPTSCSRC
<b>Purity</b>	90%, by SDS-PAGE with Coomassie Brilliant Blue staining.
<b>Storage</b>	Short-term storage: Store at 2-8°C for (1-2 weeks). Long-term storage: Aliquot and store at -20°C to -80°C for up to 3 months, buffer containing 50% glycerol is recommended for reconstitution. Avoid repeat freeze-thaw cycles.
<b>Reconstitution</b>	Reconstitute at 0.25 g/μl in 200 μl sterile water for short-term storage.

 Tel: 1-631-559-9269    1-516-512-3133

 Email: [info@creative-biomart.com](mailto:info@creative-biomart.com)     Fax: 1-631-938-8127

 45-1 Ramsey Road, Shirley, NY 11967, USA

Reconstitution with 200 µl 50% glycerol solution is recommended for longer term storage (see Stability and Storage for more details).

If a different concentration is needed for your purposes please adjust the reconstitution volume as required (please note: the ion concentration of the final solution will vary according to the volume used).

Note: Centrifuge vial before opening. When reconstituting, gently pipet and wash down the sides of the vial to ensure full recovery of the protein into solution.

## GENE INFORMATION

**Gene Name** ZG16 zymogen granule protein 16 [ Homo sapiens (human) ]

**Official Symbol** ZG16

**Synonyms** JCLN; JCLN1; ZG16A

**Gene ID** 653808

**mRNA Refseq** NM\_152338.4

**Protein Refseq** NP\_689551.3

**MIM** 617311

**UniProt ID** O60844

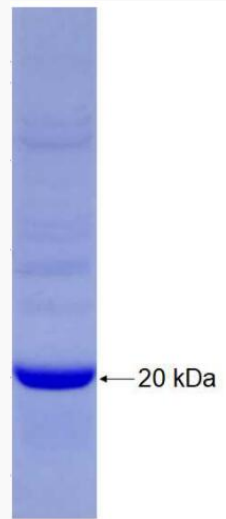
 Tel: 1-631-559-9269 1-516-512-3133

 Email: [info@creative-biomart.com](mailto:info@creative-biomart.com)  Fax: 1-631-938-8127

 45-1 Ramsey Road, Shirley, NY 11967, USA



SDS-PAGE



Tel: 1-631-559-9269 1-516-512-3133

Email: [info@creative-biomart.com](mailto:info@creative-biomart.com) Fax: 1-631-938-8127

45-1 Ramsey Road, Shirley, NY 11967, USA