

Recombinant Human ZG16B protein(53-208aa), His-tagged

Cat. No. ZG16B-1024H Lot. No. (See product label)

SPECIFICATION

Product Overview	Recombinant Human ZG16B protein(Q96DA0)(53-208aa), fused with C-terminal His tag, was expressed in HEK293.
Species	Human
Source	HEK293
ProteinLength	53-208aa
Form	Lyophilized from a 0.2 µm filtered 20 mM Tris-HCl, 0.5 M NaCl, 6% Trehalose, pH 8.0
Bio-activity	Measured by its binding ability in a functional ELISA. Immobilized Human ZG16B at 2 µg/mL can bind Anti-ZG16B recombinant antibody (CSB-RA836195MA1HU), the EC50 is 24.13-46.04 ng/mL.
Molecular Mass	20.0 kDa
Endotoxin	Less than 1.0 EU/ug as determined by LAL method.
Purity	Greater than 95% as determined by SDS-PAGE.
Storage	Store at -20°C/-80°C upon receipt, aliquoting is necessary for mutiple use. Avoid repeated freeze-thaw cycles.
Reconstitution	We recommend that this vial be briefly centrifuged prior to opening to bring the

 Tel: 1-631-559-9269 1-516-512-3133

 Email: info@creative-biomart.com  Fax: 1-631-938-8127

 45-1 Ramsey Road, Shirley, NY 11967, USA

contents to the bottom. Please reconstitute protein in deionized sterile water to a concentration of 0.1-1.0 mg/mL. We recommend to add 5-50% of glycerol (final concentration) and aliquot for long-term storage at -20°C/-80°C.

AA Sequence

GKMYGPGGGKYFSTTEDYDHEITGLRVSVGLLLVKSQVQKLGDSWDVKLGALGGN
TQEVTLQPGEYITKVFVAFQAFLRGMVMYTSKDRYFYFGKLDGQISSAYPSQEGQV
LVGIYGQYQLLGIKISIGFEWNYPLEEPTTEPPVNLTYNSANSPVGR

GENE INFORMATION

Gene Name

ZG16B zymogen granule protein 16 homolog B (rat) [Homo sapiens]

Official Symbol

ZG16B

Synonyms

ZG16B; zymogen granule protein 16 homolog B (rat); zymogen granule protein 16 homolog B; HRPE773; jacalin like lectin domain containing 2; JCLN2; PRO1567; endocrine and exocrine protein; jacalin-like lectin domain containing 2; pancreatic adenocarcinoma upregulated factor; EECP; PAUF;

Gene ID

124220

mRNA Refseq

NM_145252

Protein Refseq

NP_660295

UniProt ID

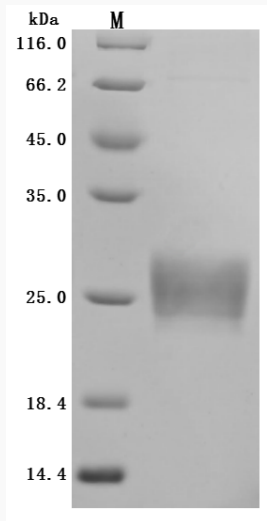
Q96DA0

 Tel: 1-631-559-9269 1-516-512-3133

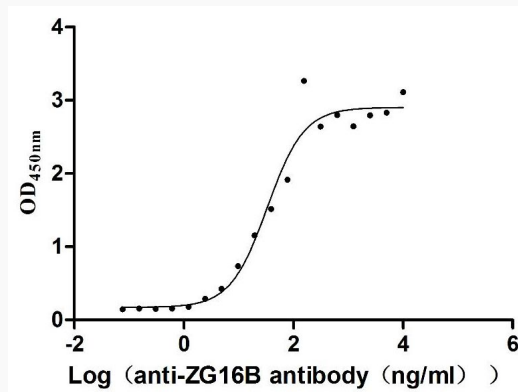
 Email: info@creative-biomart.com  Fax: 1-631-938-8127

 45-1 Ramsey Road, Shirley, NY 11967, USA

SDS-PAGE



Activity



 Tel: 1-631-559-9269 1-516-512-3133

 Email: info@creative-biomart.com  Fax: 1-631-938-8127

 45-1 Ramsey Road, Shirley, NY 11967, USA