

Recombinant Full Length Human ZG16B Protein, C-Flag-tagged

Cat. No. ZG16B-1396HFL **Lot. No.** (See product label)

SPECIFICATION

Product Overview	Recombinant Full Length Human ZG16B Protein, fused to Flag-tag at C-terminus, was expressed in Mammalian cells.
Species	Human
Source	Mammalian Cells
Description	Predicted to enable carbohydrate binding activity. Involved in retina homeostasis. Located in extracellular exosome.
Form	25 mM Tris HCl, pH 7.3, 100 mM glycine, 10% glycerol.
Molecular Mass	22.6 kDa
AA Sequence	MGAQGAQESIKAMWRVPGTTRRPVTGESPGMHRPEAMLLLLTLALLGGPTWAGKM YGPGGGKYFSTTEDY DHEITGLRVSVGLLLVKSQVVKLGDSWDVKLGALGGNTQE VTLQPGEYITKVFVAFQAFLRGMVMYTSKD RYFYFGKLDGQISSAYPSQEGQVLVGI YGQYQLLGIKSIGFEWNYPLEEPTTEPPVNLTYNSANSPVGRTRTRPLEQKLISEEDLA ANDILDYKDDDDKV
Purity	> 80% as determined by SDS-PAGE and Coomassie blue staining.
Stability	Stable for 12 months from the date of receipt of the product under proper storage and handling conditions. Avoid repeated freeze-thaw cycles.

 Tel: 1-631-559-9269 1-516-512-3133

 Email: info@creative-biomart.com  Fax: 1-631-938-8127

 45-1 Ramsey Road, Shirley, NY 11967, USA

Storage	Store at -80 centigrade.
Concentration	>50 ug/mL as determined by microplate BCA method.
Preparation	Recombinant protein was captured through anti-DDK affinity column followed by conventional chromatography steps.
Full Length	Full L.

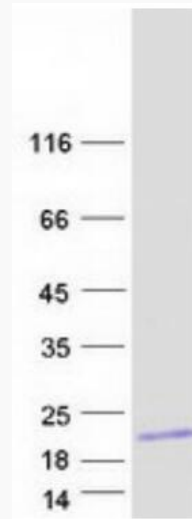
GENE INFORMATION

Gene Name	ZG16B zymogen granule protein 16B [Homo sapiens (human)]
Official Symbol	ZG16B
Synonyms	EECP; PAUF; JCLN2; HRPE773; PRO1567
Gene ID	124220
mRNA Refseq	NM_145252.3
Protein Refseq	NP_660295.3
UniProt ID	Q96DA0

 Tel: 1-631-559-9269 1-516-512-3133

 Email: info@creative-biomart.com  Fax: 1-631-938-8127

 45-1 Ramsey Road, Shirley, NY 11967, USA



Coomassie blue staining of purified ZG16B protein.

Tel: 1-631-559-9269 1-516-512-3133

Email: info@creative-biomart.com Fax: 1-631-938-8127

45-1 Ramsey Road, Shirley, NY 11967, USA