

## Recombinant Human ZG16B protein, His-tagged

Cat. No. ZG16B-1598H Lot. No. (See product label)

### SPECIFICATION

<b>Product Overview</b>	Recombinant Human ZG16B aa. (Gly53~Arg208) fused with N-terminal His tag was produced in E. coli cells.
<b>Species</b>	Human
<b>Source</b>	E.coli
<b>ProteinLength</b>	Gly53~Arg208
<b>Form</b>	Freeze-dried powder
<b>Molecular Mass</b>	21kDa as determined by SDS-PAGE reducing conditions.
<b>Endotoxin</b>	<1.0EU per 1ug (determined by the LAL method)
<b>Purity</b>	>90%
<b>Applications</b>	Positive Control; Immunogen; SDS-PAGE; WB.
<b>Stability</b>	The thermal stability is described by the loss rate. The loss rate was determined by accelerated thermal degradation test, that is, incubate the protein at 37°C for 48h, and no obvious degradation and precipitation were observed. The loss rate is less than 5% within the expiration date under appropriate storage condition.
<b>Storage</b>	Avoid repeated freeze/thaw cycles. Store at 2-8°C for one month. Aliquot and store at

 Tel: 1-631-559-9269 1-516-512-3133

 Email: [info@creative-biomart.com](mailto:info@creative-biomart.com)  Fax: 1-631-938-8127

 45-1 Ramsey Road, Shirley, NY 11967, USA

	-80°C for 12 months.
<b>Concentration</b>	200µg/mL
<b>Storage buffer</b>	20mM Tris, 150mM NaCl, pH8.0, containing 1mM EDTA, 1mM DTT, 0.01% sarcosyl, 5%Trehalose and Proclin300.
<b>Reconstitution</b>	Reconstitute in 20mM Tris, 150mM NaCl (pH8.0) to a concentration of 0.1-1.0 mg/mL. Do not vortex.
<b>Isoelectric Point</b>	5.4
<b>GENE INFORMATION</b>	
<b>Gene Name</b>	ZG16B zymogen granule protein 16B [ Homo sapiens (human) ]
<b>Official Symbol</b>	ZG16B
<b>Synonyms</b>	ZG16B; zymogen granule protein 16B; EECP; PAUF; JCLN2; HRPE773; PRO1567; zymogen granule protein 16 homolog B; endocrine and exocrine protein; jacalin-like lectin domain containing 2; pancreatic adenocarcinoma upregulated factor
<b>Gene ID</b>	124220
<b>mRNA Refseq</b>	NM_145252.2
<b>Protein Refseq</b>	NP_660295.2
<b>UniProt ID</b>	Q96DA0

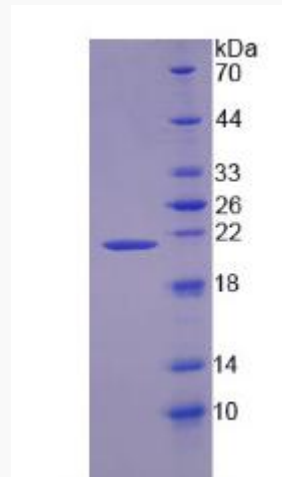
 Tel: 1-631-559-9269 1-516-512-3133

 Email: [info@creative-biomart.com](mailto:info@creative-biomart.com)  Fax: 1-631-938-8127

 45-1 Ramsey Road, Shirley, NY 11967, USA



SDS-PAGE



Tel: 1-631-559-9269 1-516-512-3133

Email: [info@creative-biomart.com](mailto:info@creative-biomart.com) Fax: 1-631-938-8127

45-1 Ramsey Road, Shirley, NY 11967, USA