

Recombinant Human ZNF200 Protein, Myc/DDK-tagged, C13 and N15-labeled

Cat. No. ZNF200-6660H **Lot. No.** (See product label)

SPECIFICATION

Product Overview	ZNF200 MS Standard C13 and N15-labeled recombinant protein (NP_003445) with a C-terminal MYC/DDK tag, was expressed in HEK293 cells.
Species	Human
Source	HEK293
Description	Could have a role in spermatogenesis.
Molecular Mass	45.5 kDa
AA Sequence	MMAAKVVPMPKPKQSFILRVPPDSKLGQDLLRDATNGPKTIHQVLVLEHFLTFLPKP SLVQPSQKVKETLVIMKDVSSSLQNRVHPRPLVKLLPKGQKEQETVSLYLKANPEE LVVFEDLNVFHCQEECVSLDPTQQLTSEKEDDSSVGMMLLAVNGSNPEGEDPER EPVENEDYREKSSDDDEMSSLSVQQPPDNQEKERLNTSIPQKRKMRNLLVTIEND TPLEELSKYVDISIILTRNRTRRWYTCPLCGKQFNESYLISHQRTHTGKPYDCN HCGKSFNHKTNLNKHRIHTGKPYSCSQCGKNFRQNSHRSRHEGIHIREKIFKCPE CGKTFPKNEEFVLHLQSHAERPYGCKKCGRRFGRLSNCTRHEKTHSACKTRKQK TRTRPLEQKLISEEDLAANDILDYKDDDDKV
Purity	> 80% as determined by SDS-PAGE and Coomassie blue staining
Stability	Stable for 3 months from receipt of products under proper storage and handling conditions.

 Tel: 1-631-559-9269 1-516-512-3133

 Email: info@creative-biomart.com  Fax: 1-631-938-8127

 45-1 Ramsey Road, Shirley, NY 11967, USA

Storage	Store at -80 centigrade. Avoid repeated freeze-thaw cycles.
----------------	---

Concentration	50 µg/mL as determined by BCA
----------------------	-------------------------------

Storage Buffer	100 mM glycine, 25 mM Tris-HCl, pH 7.3.
-----------------------	---

GENE INFORMATION

Gene Name	ZNF200 zinc finger protein 200 [Homo sapiens (human)]
------------------	---

Official Symbol	ZNF200
------------------------	--------

Synonyms	ZNF200; zinc finger protein 200; MGC45293;
-----------------	--

Gene ID	7752
----------------	------

mRNA Refseq	NM_003454
--------------------	-----------

Protein Refseq	NP_003445
-----------------------	-----------

MIM	603231
------------	--------

UniProt ID	P98182
-------------------	--------

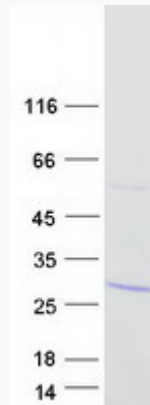
 Tel: 1-631-559-9269 1-516-512-3133

 Email: info@creative-biomart.com  Fax: 1-631-938-8127

 45-1 Ramsey Road, Shirley, NY 11967, USA



SDS-PAGE



Tel: 1-631-559-9269 1-516-512-3133

Email: info@creative-biomart.com Fax: 1-631-938-8127

45-1 Ramsey Road, Shirley, NY 11967, USA