

Recombinant Human ZNF280A protein, GST-tagged

Cat. No. ZNF280A-9755H Lot. No. (See product label)

SPECIFICATION

Product Overview	Recombinant Human ZNF280A protein(461-542 aa), fused with N-terminal GST tag, was expressed in E.coli.
Species	Human
Source	E.coli
ProteinLength	461-542 aa
Form	The purified protein was lyophilized from sterile phosphate-buffered saline (PBS: 58 mM Na ₂ HPO ₄ , 17 mM NaH ₂ PO ₄ , 68 mM NaCl, pH 8.0). Prior to lyophilization, 5% (w/v) trehalose and 5% (w/v) mannitol were incorporated as cryoprotective excipients.
AASequence	LTLKEEIEHKTKDQHQTFFKKPEQLQGLPSETKVIIQTSVQPGSSGMASVIVSNTDPQSS PVKTKKKTAMNTRDSRLPCSKDSS
Purity	85%, by SDS-PAGE with Coomassie Brilliant Blue staining.
Storage	Store at 2-8°C for 1-2 weeks. Aliquot and store at -20°C to -80°C for up to 3 months, reconstitution with sterile water and addition of an equal volume of glycerol. Avoid repeat freeze-thaw cycles.
Reconstitution	Dissolve the product in 200 µl sterile water to achieve a working concentration of 0.25 g/

 Tel: 1-631-559-9269 1-516-512-3133

 Email: info@creative-biomart.com  Fax: 1-631-938-8127

 45-1 Ramsey Road, Shirley, NY 11967, USA

µl. If experimental compatibility allows, mix the aqueous solution with an equal volume of glycerol (1:1 ratio) after initial reconstitution.

GENE INFORMATION

Gene Name	ZNF280A zinc finger protein 280A [Homo sapiens]
Official Symbol	ZNF280A
Synonyms	ZNF280A; zinc finger protein 280A; SUHW1, suppressor of hairy wing homolog 1 (Drosophila) , zinc finger protein 280 , ZNF280; 3OY11.1; ZNF636; zinc finger protein 280; zinc finger protein 636; suppressor of hairy wing homolog 1; SUHW1; ZNF280;
Gene ID	129025
mRNA Refseq	NM_080740
Protein Refseq	NP_542778
UniProt ID	P59817

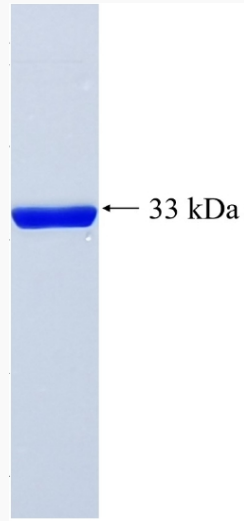
 Tel: 1-631-559-9269 1-516-512-3133

 Email: info@creative-biomart.com  Fax: 1-631-938-8127

 45-1 Ramsey Road, Shirley, NY 11967, USA



SDS-PAGE



Tel: 1-631-559-9269 1-516-512-3133

Email: info@creative-biomart.com Fax: 1-631-938-8127

45-1 Ramsey Road, Shirley, NY 11967, USA