

Recombinant Human ZNF567 Protein, Myc/DDK-tagged, C13 and N15-labeled

Cat. No. ZNF567-6482H **Lot. No.** (See product label)

SPECIFICATION

Product Overview	ZNF567 MS Standard C13 and N15-labeled recombinant protein (NP_689816) with a C-terminal MYC/DDK tag, was expressed in HEK293 cells.
Species	Human
Source	HEK293
Description	May be involved in transcriptional regulation.
Molecular Mass	71.6 kDa
AA Sequence	<p>MDVMLENYCHLISVGCHMTKPDVILKLERGEEPWTSFAGHTCLEENWKAEDFLVKF KEHQEKYSRSVVSINHKLVKEKSKIYEKFTTLGKNPVNSKNLPPEYDTHGRILKNVS ELIISNLPARKRLSEYNGYGKSLSTKQETTHPEVKSHNQSARAFSHNEVLMQYQK TETPAQSFQYNDCEKSFLQRGGLITHSRPYKGENPSVYNKKRRATNIEKKHTCNEC GKSFCRKSVLILHQGIHSEEKPYQCHQCGNAFRRKSYLIDHQRTHHTGEKPFVCNEC GKSFRLKTALTDHQRTHHTGEKSYECLQCRNAFRLKSHLIRHQRTHHTGEKPYECNDC GKSFRQKTTLSLHQRIHTGEKPYICKECGKSFHQKANLTVHQRTHHTGEKPYICNECG KSFSQKTTLALHEKTHNEEKPYICSECGKSFQKTTLVAHQRTHTGEKSYECPHCG KAFRMKSYLIDHHRTHHTGEKPYECNECGKSFQKTNLNLHQRIHTGEKPYVCNECG KSFRQKATLTVHQKIHTGQKSYECPQCGKAFSRKSYLIHHQRTHHTGEKPYKCSECG KCFRQKTNLIVHQRTHHTGEKPYVCNECGKSFYKRNLIVHQRTHKGENIEMQTRTR PLEQKLISEEDLAANDILDYKDDDDKV</p>

 Tel: 1-631-559-9269 1-516-512-3133

 Email: info@creative-biomart.com  Fax: 1-631-938-8127

 45-1 Ramsey Road, Shirley, NY 11967, USA

Purity	> 80% as determined by SDS-PAGE and Coomassie blue staining
Stability	Stable for 3 months from receipt of products under proper storage and handling conditions.
Storage	Store at -80 centigrade. Avoid repeated freeze-thaw cycles.
Concentration	50 µg/mL as determined by BCA
Storage Buffer	100 mM glycine, 25 mM Tris-HCl, pH 7.3.

GENE INFORMATION

Gene Name	ZNF567 zinc finger protein 567 [Homo sapiens (human)]
Official Symbol	ZNF567
Synonyms	ZNF567; zinc finger protein 567; MGC45586;
Gene ID	163081
mRNA Refseq	NM_152603
Protein Refseq	NP_689816
UniProt ID	Q8N184

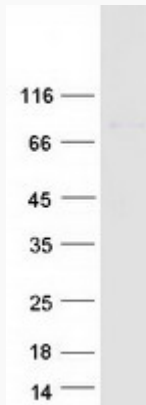
 Tel: 1-631-559-9269 1-516-512-3133

 Email: info@creative-biomart.com  Fax: 1-631-938-8127

 45-1 Ramsey Road, Shirley, NY 11967, USA



SDS-PAGE



Tel: 1-631-559-9269 1-516-512-3133

Email: info@creative-biomart.com Fax: 1-631-938-8127

45-1 Ramsey Road, Shirley, NY 11967, USA