

Recombinant Human ZNF766 Protein, GST-tagged

Cat. No. ZNF766-4750H Lot. No. (See product label)

SPECIFICATION

Product Overview	Human LOC90321 full-length ORF (NP_001010851.1, 1 a.a. - 468 a.a.) recombinant protein with GST-tag at N-terminal.
Species	Human
Source	Wheat Germ
Description	ZNF766 (Zinc Finger Protein 766) is a Protein Coding gene. GO annotations related to this gene include nucleic acid binding. An important paralog of this gene is ZNF880.
Molecular Mass	80.9 kDa
AA Sequence	<p>MAQLRRGHLTFRDVAIEFSQEEWKCLDPVQKALYRDVMLENYRNLVSLGICLPDLSII SMMKQRTEPWTVENEMKVAKNPDRWEGIKDINTGRSCAVRSKAGNKPITNQLGLTF QLPLPELEIFQGEGKIYEENQVQKFISHSSSVSPLQRIYSGVKTHIFNKHRNDFVDFPL LSQEQKAHIRRKPYPYECNEQGKVFVRVSSSLPNHQVIHTADKPNRCHECGKTVRDKSG LAEHWRI RTGEKPYKCKEKGKLFNRIAYLARHEKVHTGESPYKCNCEGKVFSRITYL VRHQKIHTREKPHKCNKCGKVYSSSSYLAQHWRIHTGEKLYKCNKCGKEFSGHSSL TTHLLIHTGEKPYKCKECDKAFRHKFSLTVHQRNHNGEKPYKCHECGKVFTQVSHL ARHQKIHTGEKPYKCNCEGKVFTQNSHLANHQRIHTGEKPYKCHVCGKVFRHSSW FVQHQRSVHERVLTN</p>
Applications	Enzyme-linked Immunoabsorbent Assay Western Blot (Recombinant protein)

 Tel: 1-631-559-9269 1-516-512-3133

 Email: info@creative-biomart.com  Fax: 1-631-938-8127

 45-1 Ramsey Road, Shirley, NY 11967, USA

Antibody Production
Protein Array

Notes	Best use within three months from the date of receipt of this protein.
Storage	Store at -80 centigrade. Aliquot to avoid repeated freezing and thawing.
Storage Buffer	50 mM Tris-HCl, 10 mM reduced Glutathione, pH=8.0 in the elution buffer.

GENE INFORMATION

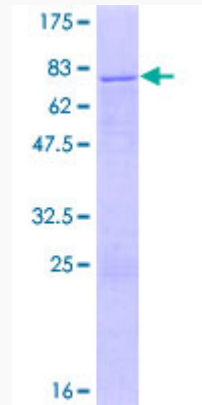
Gene Name	ZNF766 zinc finger protein 766 [Homo sapiens]
Official Symbol	ZNF766
Synonyms	ZNF766; zinc finger protein 766;
Gene ID	90321
mRNA Refseq	NM_001010851
Protein Refseq	NP_001010851
UniProt ID	Q5HY98

 Tel: 1-631-559-9269 1-516-512-3133

 Email: info@creative-biomart.com  Fax: 1-631-938-8127

 45-1 Ramsey Road, Shirley, NY 11967, USA

**Quality Control
Testing**



12.5% SDS-PAGE Stained with Coomassie Blue

 Tel: 1-631-559-9269 1-516-512-3133

 Email: info@creative-biomart.com  Fax: 1-631-938-8127

 45-1 Ramsey Road, Shirley, NY 11967, USA