

Recombinant Human ZNF785 Protein, GST-tagged

Cat. No. ZNF785-4303H Lot. No. (See product label)

SPECIFICATION

Product Overview	Human FLJ32130 full-length ORF (NP_689671.2, 1 a.a. - 405 a.a.) recombinant protein with GST-tag at N-terminal.
Species	Human
Source	Wheat Germ
Description	ZNF785 (Zinc Finger Protein 785) is a Protein Coding gene. Among its related pathways are Gene Expression. GO annotations related to this gene include nucleic acid binding. An important paralog of this gene is ZNF689.
Molecular Mass	72.6 kDa
AA Sequence	MGPPLAPRPAHVPGGEAGPRRTRESRPGAVSFADVAVYFSPEEWECLRPAQRALYR DVMRETFGHLGALGFSVPKPAFISWVEGEVEAWSPEAQDPDGESSAAFSRGGQGE AGSRDGNEEKERLKKCPKQKEVAHEVAVKEWWPSVACPEFCNPRQSPMNPWLKD TLTRRLPHSCPDGGRNFSYPSLLASHQRVHSGERPFSCGQCQARFSQRRYLLQHQ FIHTGEKPYPCPDGRRFRQRGSLAIHRRRAHTGEKPYACSDCKSRFTYPYLLAIHQR KHTGEKPYSCPDCLRFAYTSLLAIHRRRIHTGEKPYPCPDGRRFTYSSLLLSHRRIH SDSRPFPCVECGKGFKRKTALEAHRWIHRSCSERRAWQQAVVGRSEPIPVLGGKD PPVHFRHFDPDIFQECG
Applications	Enzyme-linked Immunoabsorbent Assay Western Blot (Recombinant protein) Antibody Production

 Tel: 1-631-559-9269 1-516-512-3133

 Email: info@creative-biomart.com  Fax: 1-631-938-8127

 45-1 Ramsey Road, Shirley, NY 11967, USA

Protein Array

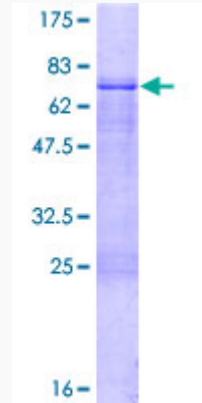
Notes	Best use within three months from the date of receipt of this protein.
Storage	Store at -80 centigrade. Aliquot to avoid repeated freezing and thawing.
Storage Buffer	50 mM Tris-HCl, 10 mM reduced Glutathione, pH=8.0 in the elution buffer.

GENE INFORMATION

Gene Name	ZNF785 zinc finger protein 785 [Homo sapiens]
Official Symbol	ZNF785
Synonyms	ZNF785; zinc finger protein 785; FLJ32130;
Gene ID	146540
mRNA Refseq	NM_152458
Protein Refseq	NP_689671
UniProt ID	A8K8V0

 Tel: 1-631-559-9269 1-516-512-3133 Email: info@creative-biomart.com  Fax: 1-631-938-8127 45-1 Ramsey Road, Shirley, NY 11967, USA

**Quality Control
Testing**



12.5% SDS-PAGE Stained with Coomassie Blue.

 Tel: 1-631-559-9269 1-516-512-3133

 Email: info@creative-biomart.com  Fax: 1-631-938-8127

 45-1 Ramsey Road, Shirley, NY 11967, USA