

# Recombinant Human ZNRD1 Protein, Myc/DDK-tagged, C13 and N15-labeled

Cat. No. ZNRD1-5350H Lot. No. (See product label)

## SPECIFICATION

<b>Product Overview</b>	ZNRD1 MS Standard C13 and N15-labeled recombinant protein (NP_740753) with a C-terminal MYC/DDK tag, was expressed in HEK293 cells.
<b>Species</b>	Human
<b>Source</b>	HEK293
<b>Description</b>	This gene encodes a DNA-directed RNA polymerase I subunit. The encoded protein contains two potential zinc-binding motifs and may play a role in regulation of cell proliferation. The encoded protein may be involved in cancer and human immunodeficiency virus progression. Alternative splicing results in multiple transcript variants.
<b>Molecular Mass</b>	13.9 kDa
<b>AA Sequence</b>	MSVMDLANTCSSFQSDLDFCSDCGSVLPLPGAQDTVTCIRCGFNINVRDFEGKVVK TSVVFHQLGTAMPMSVEEGPECQGPVVDRCPRCGHEGMAYHTRQMRSADDEGQ TVFYTCTNCKFQEKEDSTRTRPLEQKLISEEDLAANDILDYKDDDDKV
<b>Purity</b>	> 80% as determined by SDS-PAGE and Coomassie blue staining
<b>Stability</b>	Stable for 3 months from receipt of products under proper storage and handling conditions.

 Tel: 1-631-559-9269 1-516-512-3133

 Email: [info@creative-biomart.com](mailto:info@creative-biomart.com)  Fax: 1-631-938-8127

 45-1 Ramsey Road, Shirley, NY 11967, USA

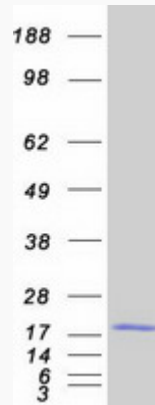
<b>Storage</b>	Store at -80 centigrade. Avoid repeated freeze-thaw cycles.
<b>Concentration</b>	50 µg/mL as determined by BCA
<b>Storage Buffer</b>	100 mM glycine, 25 mM Tris-HCl, pH 7.3.
<b>GENE INFORMATION</b>	
<b>Gene Name</b>	ZNRD1 zinc ribbon domain containing 1 [ Homo sapiens (human) ]
<b>Official Symbol</b>	ZNRD1
<b>Synonyms</b>	ZNRD1; zinc ribbon domain containing 1; zinc ribbon domain containing, 1; DNA-directed RNA polymerase I subunit RPA12; HTEX 6; hZR14; RPA12; tctex 6; zinc ribbon domain-containing protein 1; transcription-associated zinc ribbon protein; RNA polymerase I small specific subunit Rpa12; TEX6; Rpa12; HTEX-6; tctex-6; MGC13376;
<b>Gene ID</b>	30834
<b>mRNA Refseq</b>	NM_170783
<b>Protein Refseq</b>	NP_740753
<b>MIM</b>	607525
<b>UniProt ID</b>	Q9P1U0

 Tel: 1-631-559-9269 1-516-512-3133

 Email: [info@creative-biomart.com](mailto:info@creative-biomart.com)  Fax: 1-631-938-8127

 45-1 Ramsey Road, Shirley, NY 11967, USA

SDS-PAGE



 Tel: 1-631-559-9269 1-516-512-3133

 Email: [info@creative-biomart.com](mailto:info@creative-biomart.com)  Fax: 1-631-938-8127

 45-1 Ramsey Road, Shirley, NY 11967, USA