

# Recombinant Human ZBPB2 Protein, Myc/DDK-tagged, C13 and N15-labeled

Cat. No. ZBPB2-5245H Lot. No. (See product label)

## SPECIFICATION

<b>Product Overview</b>	ZBPB2 MS Standard C13 and N15-labeled recombinant protein (NP_955353) with a C-terminal MYC/DDK tag, was expressed in HEK293 cells.
<b>Species</b>	Human
<b>Source</b>	HEK293
<b>Description</b>	ZBPB2 (Zona Pellucida Binding Protein 2) is a Protein Coding gene. Diseases associated with ZBPB2 include Primary Biliary Cirrhosis. An important paralog of this gene is ZPBP.
<b>Molecular Mass</b>	38.5 kDa
<b>AA Sequence</b>	MMRTCVELLSAVLWCLTGVQCPRFTLFNKKGFIYGKTGQPDKIYVELHQNSPVLICMDFKLSKKEIVDPTYLWIGPNEKTLTGNNRINITETGQLMVKDFLEPLSGLYTCTLSYKTKAETQEEKTVKKRYDFMVFAYREPDYSYQMAVRFTRRSCIGRYNDVFFRVLKILDSLISDLSCHVIEPSYKCHSVEIPEHGLIHELFIQVNPFPAGWKGACNGSVDCEDTTNHNILQARDRIEDFFRSQAYIFYHNFNKTLPAMHFVDHSLQVVRDLSCRPGFGKNERLHSNCASCCVVCSPATFSPDVNVTCQTCVSVLTYGAKSCPQTSNKNQQYEDTRTRPLEQKLISEEDLAANDILDYKDDDDKV
<b>Purity</b>	> 80% as determined by SDS-PAGE and Coomassie blue staining
<b>Stability</b>	Stable for 3 months from receipt of products under proper storage and handling

 Tel: 1-631-559-9269 1-516-512-3133

 Email: [info@creative-biomart.com](mailto:info@creative-biomart.com)  Fax: 1-631-938-8127

 45-1 Ramsey Road, Shirley, NY 11967, USA

conditions.

**Storage** Store at -80 centigrade. Avoid repeated freeze-thaw cycles.

**Concentration** 50 µg/mL as determined by BCA

**Storage Buffer** 100 mM glycine, 25 mM Tris-HCl, pH 7.3.

## GENE INFORMATION

**Gene Name** ZPBP2 zona pellucida binding protein 2 [ Homo sapiens (human) ]

**Official Symbol** ZPBP2

**Synonyms** ZPBP2; zona pellucida binding protein 2; zona pellucida-binding protein 2; MGC41930; ZPBPL; ZPBP-like protein;

**Gene ID** 124626

**mRNA Refseq** NM\_199321

**Protein Refseq** NP\_955353

**MIM** 608499

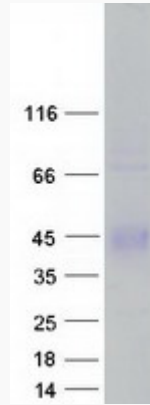
**UniProt ID** Q6X784

 Tel: 1-631-559-9269 1-516-512-3133

 Email: [info@creative-biomart.com](mailto:info@creative-biomart.com)  Fax: 1-631-938-8127

 45-1 Ramsey Road, Shirley, NY 11967, USA

**SDS-PAGE**



 Tel: 1-631-559-9269 1-516-512-3133

 Email: [info@creative-biomart.com](mailto:info@creative-biomart.com)  Fax: 1-631-938-8127

 45-1 Ramsey Road, Shirley, NY 11967, USA