

# Recombinant Human ZPLD1 Protein, Myc/DDK-tagged, C13 and N15-labeled

Cat. No. ZPLD1-2782H Lot. No. (See product label)

## SPECIFICATION

<b>Product Overview</b>	ZPLD1 MS Standard C13 and N15-labeled recombinant protein (NP_778226) with a C-terminal MYC/DDK tag, was expressed in HEK293 cells.
<b>Species</b>	Human
<b>Source</b>	HEK293
<b>Description</b>	Glycoprotein which is a component of the gelatinous extracellular matrix in the cupulae of the vestibular organ.
<b>Molecular Mass</b>	47.2 kDa
<b>AA Sequence</b>	MMLRFSMCRGNDEGFAMEQIWLLLLLTIRVLPGSAQFNGYNC DANLHSRFP AERDI SVYCGVQAITMKINFCTVLFSGYSETDLALNGRHGDSHCRGFINNNTFFAVVIFIINLS TLEGCGNNLVVSTIPGVSAYGNATSVQVGNISGYIDTPDPPTIISYLPGLLYKFSCSYP LEYLVNNTQLASSAAISVRENNGTFVSTLNLLLYNDSTYNQQLIIPSIGLPLKTKVFAA VQATNLDGRWNVLMDYCYTTPSGNPND DIRYDLFLSCDKDPQTTVIENGRSQRGRF SFEVFRFVKHKNQKMSTVFLHCVTKLCRADD CPFLMPICSHRERRDAGRRTTWSP QSSSGSAVLSAGPIITRSDETPTNNSQLGSPSMPPFQLNAITSALISGMVILGVTSFSL LLCSLALLHRKGPTSLVLNGIRNPVFDTRTRPLEQKLISEEDLAANDILDYKDDDDKV
<b>Purity</b>	> 80% as determined by SDS-PAGE and Coomassie blue staining
<b>Stability</b>	Stable for 3 months from receipt of products under proper storage and handling

 Tel: 1-631-559-9269 1-516-512-3133

 Email: [info@creative-biomart.com](mailto:info@creative-biomart.com)  Fax: 1-631-938-8127

 45-1 Ramsey Road, Shirley, NY 11967, USA

conditions.

**Storage** Store at -80 centigrade. Avoid repeated freeze-thaw cycles.

**Concentration** 50 µg/mL as determined by BCA

**Storage Buffer** 100 mM glycine, 25 mM Tris-HCl, pH 7.3.

## GENE INFORMATION

**Gene Name** [ZPLD1 zona pellucida-like domain containing 1 \[ Homo sapiens \(human\) \]](#)

**Official Symbol** [ZPLD1](#)

**Synonyms** ZPLD1; zona pellucida-like domain containing 1; zona pellucida-like domain-containing protein 1; ZP domain-containing protein 1;

**Gene ID** [131368](#)

**mRNA Refseq** [NM\\_175056](#)

**Protein Refseq** [NP\\_778226](#)

**MIM** [615915](#)

**UniProt ID** [Q8TCW7](#)

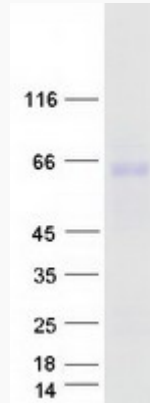
 Tel: 1-631-559-9269 1-516-512-3133

 Email: [info@creative-biomart.com](mailto:info@creative-biomart.com)  Fax: 1-631-938-8127

 45-1 Ramsey Road, Shirley, NY 11967, USA



SDS-PAGE



Tel: 1-631-559-9269 1-516-512-3133

Email: [info@creative-biomart.com](mailto:info@creative-biomart.com) Fax: 1-631-938-8127

45-1 Ramsey Road, Shirley, NY 11967, USA