

Recombinant Human ZSCAN22 Protein, GST-tagged

Cat. No. ZSCAN22-4831H Lot. No. (See product label)

SPECIFICATION

Product Overview	Human HKR2 partial ORF (NP_862829.1, 196 a.a. - 294 a.a.) recombinant protein with GST-tag at N-terminal.
Species	Human
Source	Wheat Germ
Description	ZSCAN22 (Zinc Finger And SCAN Domain Containing 22) is a Protein Coding gene. GO annotations related to this gene include transcription factor activity, sequence-specific DNA binding. An important paralog of this gene is ZNF286A.
Molecular Mass	36.63 kDa
AA Sequence	KSVTQQIHFKKTS GPYKDVPTDQRGREGASRNSSSAWPNLTSQEKPSEDKFDLV DAYGTEPPYTYSGKRSSKRECRKMFQSASALEAHQKTHSRKT
Applications	Enzyme-linked Immunoabsorbent Assay Western Blot (Recombinant protein) Antibody Production Protein Array
Notes	Best use within three months from the date of receipt of this protein.
Storage	Store at -8 centigrade. Aliquot to avoid repeated freezing and thawing.

 Tel: 1-631-559-9269 1-516-512-3133

 Email: info@creative-biomart.com  Fax: 1-631-938-8127

 45-1 Ramsey Road, Shirley, NY 11967, USA

Storage Buffer 50 mM Tris-HCl, 10 mM reduced Glutathione, pH=8.0 in the elution buffer.

GENE INFORMATION

Gene Name [ZSCAN22 zinc finger and SCAN domain containing 22 \[Homo sapiens \]](#)

Official Symbol [ZSCAN22](#)

Synonyms ZSCAN22; zinc finger and SCAN domain containing 22; GLI Kruppel family member HKR2 , HKR2, zinc finger protein 50 , ZNF50; zinc finger and SCAN domain-containing protein 22; oncogene HKR2; zinc finger protein 50; GLI-Kruppel family member HKR2; krueppel-related zinc finger protein 2; HKR2; ZNF50; MGC126679; MGC138482;

Gene ID [342945](#)

mRNA Refseq [NM_181846](#)

Protein Refseq [NP_862829](#)

MIM [165260](#)

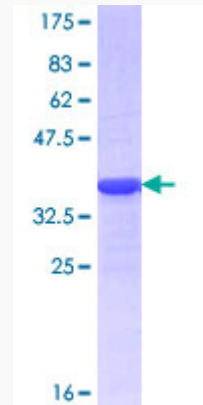
UniProt ID [P10073](#)

 Tel: 1-631-559-9269 1-516-512-3133

 Email: info@creative-biomart.com  Fax: 1-631-938-8127

 45-1 Ramsey Road, Shirley, NY 11967, USA

**Quality Control
Testing**



12.5% SDS-PAGE Stained with Coomassie Blue.

 Tel: 1-631-559-9269 1-516-512-3133

 Email: info@creative-biomart.com  Fax: 1-631-938-8127

 45-1 Ramsey Road, Shirley, NY 11967, USA