

Recombinant Human ZSWIM1 Protein, Myc/DDK-tagged, C13 and N15-labeled

Cat. No. ZSWIM1-1216H **Lot. No.** (See product label)

SPECIFICATION

Product Overview	ZSWIM1 MS Standard C13 and N15-labeled recombinant protein (NP_542170) with a C-terminal MYC/DDK tag, was expressed in HEK293 cells.
Species	Human
Source	HEK293
Description	ZSWIM1 (Zinc Finger SWIM-Type Containing 1) is a Protein Coding gene. Diseases associated with ZSWIM1 include Periodic Limb Movement Disorder and Benign Epilepsy With Centrottemporal Spikes. An important paralog of this gene is ZSWIM3.
Molecular Mass	55.1 kDa
AA Sequence	MLERLKAPWSAALQRKYFDLGIWTAPISPMALTMLNGLLIKDSSPPMLLHQVNKTAQ LDTFNYQSCFMQSVFDHFPEILFIHRTYNPRGKVLTYTFLVDGPRVQLEGHLARAVYF AIPAKEDTEGLAQMFQVFKKFNPAWERVCTILVDPHFLPLPILAMEFPPTAEVLLSAFHI CKFLQAKFYQLSLERPVERLLLTSLQSTMCSATAGNLRKLYTLLSNCIPPAKLPELHS HWLLNDRIWLHRWRSRAESSHYFQSLEVTTHILSQFFGTTTPEKQGMASLFRYMQ QNSADKANFNQGLCAQNNHAPSDTIPESPKLEQLVESHIQHSLNAICTGPAAQLCLG ELAVVQKSTHLIGSGSEKMNIQILEDTHKVQPQPPASCSCYFNQAFHLPCRHLAMLS ARRQVLQPDMLPAQWTAGCATSLDSILGSKWSETLDKHLAVTHLTEEVGQLLQHCT KEEFERRYSTLRELADSWIGPYEQVQLTRTRPLEQKLISEEDLAANDILDYKDDDDKV
Purity	> 80% as determined by SDS-PAGE and Coomassie blue staining

 Tel: 1-631-559-9269 1-516-512-3133

 Email: info@creative-biomart.com  Fax: 1-631-938-8127

 45-1 Ramsey Road, Shirley, NY 11967, USA

Stability	Stable for 3 months from receipt of products under proper storage and handling conditions.
Storage	Store at -80 centigrade. Avoid repeated freeze-thaw cycles.
Concentration	50 µg/mL as determined by BCA
Storage Buffer	100 mM glycine, 25 mM Tris-HCl, pH 7.3.

GENE INFORMATION

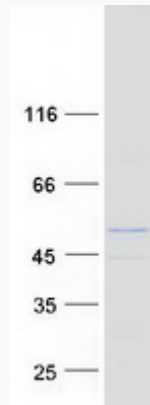
Gene Name	ZSWIM1 zinc finger SWIM-type containing 1 [Homo sapiens (human)]
Official Symbol	ZSWIM1
Synonyms	ZSWIM1; zinc finger SWIM-type containing 1; C20orf162; zinc finger SWIM domain-containing protein 1; zinc finger, SWIM domain containing 1
Gene ID	90204
mRNA Refseq	NM_080603
Protein Refseq	NP_542170
UniProt ID	Q9BR11

 Tel: 1-631-559-9269 1-516-512-3133

 Email: info@creative-biomart.com  Fax: 1-631-938-8127

 45-1 Ramsey Road, Shirley, NY 11967, USA

SDS-PAGE



 Tel: 1-631-559-9269 1-516-512-3133

 Email: info@creative-biomart.com  Fax: 1-631-938-8127

 45-1 Ramsey Road, Shirley, NY 11967, USA