

Recombinant Human ZW10 Protein, Myc/DDK-tagged, C13 and N15-labeled

Cat. No. ZW10-762H **Lot. No.** (See product label)

SPECIFICATION

Product Overview	ZW10 MS Standard C13 and N15-labeled recombinant protein (NP_004715) with a C-terminal MYC/DDK tag, was expressed in HEK293 cells.
Species	Human
Source	HEK293
Description	This gene encodes a protein that is one of many involved in mechanisms to ensure proper chromosome segregation during cell division. This protein is an essential component of the mitotic checkpoint, which prevents cells from prematurely exiting mitosis.
Molecular Mass	88.6 kDa
AA Sequence	MASFVTEVLAHSGRLEKEDLGTRISRLTRRVEEIKGEVCNMISKKYSEFLPSMQSAQ GLITQVDKLSIEDIDLLKSRIESEVRRDLHVSTGEFTDLKQQLERDSVVLSELLKQLQEF STAIEEYNALTEKKYVTGAQRLEEAQKCLKLLKSRKCFDLKILKSLSMELTIQKQNIL YHLGEEWQKLIVWKFPPSKDTSLESYLQTELHLYTEQSHKEEKTPMPPISSVLLAF SVLGELHSLKLSFGQMLLYILRPLASCPSLHAVIESQPNIIRFESIMTNLEYPPSPSE VFTKIRLVLEVLQKQLLDLPLDLDLENEKTSTVPLAEMLGDMIWEDLSECLIKNCLVYS IPTNSSKLQQYEEIIQSTEEFENALKEMRFLKGDTTDLLKYARNINSHFANKKCQDVIV AARNLMTSEIHNTVKIIPDSKINVPPELPTPDEDNKLEVQKVSNTQYHEVMNLEPENTL DQHSFSLPTCRISESVKMLMELAYQTLLEATTSSDQCAVQLFYSVRNIFHLFHDVVPT

 Tel: 1-631-559-9269 1-516-512-3133

 Email: info@creative-biomart.com  Fax: 1-631-938-8127

 45-1 Ramsey Road, Shirley, NY 11967, USA

YHKENLQKLPQLAAIHHNNCMYIAHLLTLGHQFRLRLAPILCDGTATFVDLVPGFRR
 LGTECFLAQMRAQKGELLERLSSARNFSNMDDEENYSAASKAVRQVLHQLKRLGIV
 WQDVLPVNIYCKAMGTLNNTAISEVIGKITALEDISTEDGDRLYSLCKTVMDEGPQVF
 APLSEESKNKKYQEEVPVYVPKWMPFKELMMMLQASLQEIGDRWADGKGPLAAAF
 SSSEVKALIRALFQNTERRAAALAKIKTRTRPLEQKLISEEDLAANDILDYKDDDDKV

Purity > 80% as determined by SDS-PAGE and Coomassie blue staining

Stability Stable for 3 months from receipt of products under proper storage and handling conditions.

Storage Store at -80 centigrade. Avoid repeated freeze-thaw cycles.

Concentration 50 µg/mL as determined by BCA

Storage Buffer 100 mM glycine, 25 mM Tris-HCl, pH 7.3.

GENE INFORMATION

Gene Name ZW10 zw10 kinetochore protein [*Homo sapiens (human)*]

Official Symbol ZW10

Synonyms ZW10; ZW10, kinetochore associated, homolog (*Drosophila*); ZW10 (*Drosophila*) homolog, centromere/kinetochore protein; centromere/kinetochore protein zw10 homolog; KNTC1AP; zeste white 10 homolog; ZW10 homolog, centromere/kinetochore protein; HZW10; MGC149821;

Gene ID 9183

mRNA Refseq NM_004724

 Tel: 1-631-559-9269 1-516-512-3133

 Email: info@creative-biomart.com  Fax: 1-631-938-8127

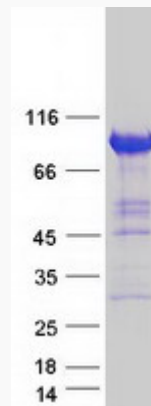
 45-1 Ramsey Road, Shirley, NY 11967, USA

Protein Refseq NP_004715

MIM 603954

UniProt ID O43264

SDS-PAGE



 Tel: 1-631-559-9269 1-516-512-3133

 Email: info@creative-biomart.com  Fax: 1-631-938-8127

 45-1 Ramsey Road, Shirley, NY 11967, USA