

Recombinant Human ZWINT Protein, Myc/DDK-tagged, C13 and N15-labeled

Cat. No. ZWINT-4887H Lot. No. (See product label)

SPECIFICATION

Product Overview

ZWINT MS Standard C13 and N15-labeled recombinant protein (NP_127490) with a C-terminal MYC/DDK tag, was expressed in HEK293 cells.

Species

Human

Source

HEK293

Description

This gene encodes a protein that is clearly involved in kinetochore function although an exact role is not known. It interacts with ZW10, another kinetochore protein, possibly regulating the association between ZW10 and kinetochores. The encoded protein localizes to prophase kinetochores before ZW10 does and it remains detectable on the kinetochore until late anaphase. It has a uniform distribution in the cytoplasm of interphase cells. Alternatively spliced transcript variants encoding different isoforms have been found for this gene.

Molecular Mass

31.2 kDa

AA Sequence

MEAAETEAEAAALEVLAEVAGILEPVGLQEEAELPAKILVEFVVDSDQKKDKLLCSQLQ
VADFLQNILAQEDTAKGLDPLASEDTSRQKAIAAKEQWKELKATYREHVEAIKIGLTK
ALTQMEEAQRKRTLREAFEQLQAKKQMAMEKRRRAVQNQWQLQKEKHLQHLAEV
SAEVRERKTGTQQELDGVFQKLGNLKQQAERDKLQRYQTFLQLLYTLQGKLLFP
EAEAEANLPDDKPQQPTRPQEQSTGDTMGRDPGVSFKAVGLQPAGDVNLPTRTR
PLEQKLISEEDLAANDILDYKDDDDKV

 Tel: 1-631-559-9269 1-516-512-3133

 Email: info@creative-biomart.com  Fax: 1-631-938-8127

 45-1 Ramsey Road, Shirley, NY 11967, USA

Purity	> 80% as determined by SDS-PAGE and Coomassie blue staining
Stability	Stable for 3 months from receipt of products under proper storage and handling conditions.
Storage	Store at -80 centigrade. Avoid repeated freeze-thaw cycles.
Concentration	50 µg/mL as determined by BCA
Storage Buffer	100 mM glycine, 25 mM Tris-HCl, pH 7.3.

GENE INFORMATION

Gene Name	ZWINT ZW10 interactor [Homo sapiens (human)]
Official Symbol	ZWINT
Synonyms	ZWINT; ZW10 interactor; KNTC2AP; zwint-1; ZW10-interacting protein 1; human ZW10 interacting protein-1; ZWINT1; HZwint-1; MGC117174;
Gene ID	11130
mRNA Refseq	NM_032997
Protein Refseq	NP_127490
MIM	609177
UniProt ID	O95229

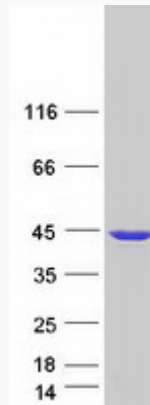
 Tel: 1-631-559-9269 1-516-512-3133

 Email: info@creative-biomart.com  Fax: 1-631-938-8127

 45-1 Ramsey Road, Shirley, NY 11967, USA



SDS-PAGE



Tel: 1-631-559-9269 1-516-512-3133

Email: info@creative-biomart.com Fax: 1-631-938-8127

45-1 Ramsey Road, Shirley, NY 11967, USA