

Recombinant Human ZWINT Protein, His-tagged

Cat. No. ZWINT-608H **Lot. No.** (See product label)

SPECIFICATION

Product Overview	Recombinant Human ZWINT Protein (Met1-Pro277) with N-His tag was expressed in E. coli.
Species	Human
Source	E.coli
ProteinLength	Met1-Pro277
Description	This gene encodes a protein that is clearly involved in kinetochore function although an exact role is not known. It interacts with ZW10, another kinetochore protein, possibly regulating the association between ZW10 and kinetochores. The encoded protein localizes to prophase kinetochores before ZW10 does and it remains detectable on the kinetochore until late anaphase. It has a uniform distribution in the cytoplasm of interphase cells. Alternatively spliced transcript variants encoding different isoforms have been found for this gene.
Form	Freeze-dried powder
Molecular Mass	Predicted Molecular Mass: 35.0 kDa Accurate Molecular Mass: 41 kDa
Purity	> 90%
Applications	Positive Control; Immunogen; SDS-PAGE; WB.

 Tel: 1-631-559-9269 1-516-512-3133

 Email: info@creative-biomart.com  Fax: 1-631-938-8127

 45-1 Ramsey Road, Shirley, NY 11967, USA

Stability	The thermal stability is described by the loss rate. The loss rate was determined by accelerated thermal degradation test, that is, incubate the protein at 37 centigrade for 48h, and no obvious degradation and precipitation were observed. The loss rate is less than 5% within the expiration date under appropriate storage condition.
Storage	Avoid repeated freeze/thaw cycles. Store at 2-8 centigrade for one month. Aliquot and store at -80 centigrade for 12 months.
Storage Buffer	20mM Tris, 150mM NaCl, pH8.0, containing 1mM EDTA, 1mM DTT, 0.01% SKL, 5% Trehalose and Proclin300.
Reconstitution	Reconstitute in sterile water to a concentration of 0.1-1.0 mg/mL. Do not vortex.

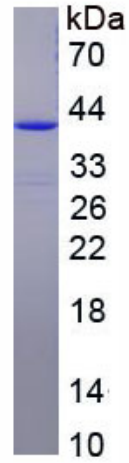
GENE INFORMATION

Gene Name	ZWINT ZW10 interactor [Homo sapiens (human)]
Official Symbol	ZWINT
Synonyms	ZWINT; ZW10 interactor; KNTC2AP; zwint-1; ZW10-interacting protein 1; human ZW10 interacting protein-1; ZWINT1; HZwint-1; MGC117174
Gene ID	11130
mRNA Refseq	NM_001005413
Protein Refseq	NP_001005413
MIM	609177
UniProt ID	O95229

 Tel: 1-631-559-9269 1-516-512-3133

 Email: info@creative-biomart.com  Fax: 1-631-938-8127

 45-1 Ramsey Road, Shirley, NY 11967, USA



Tel: 1-631-559-9269 1-516-512-3133

Email: info@creative-biomart.com Fax: 1-631-938-8127

45-1 Ramsey Road, Shirley, NY 11967, USA