

Recombinant Mouse Zeb2 protein, His & T7-tagged

Cat. No. Zeb2-1648M **Lot. No.** (See product label)

SPECIFICATION

Product Overview	Recombinant Mouse Zeb2 aa. (Gln962~Glu1215 (Accession # Q9R0G7)) fused with N-terminal His & T7 tag was produced in E. coli cells.
Species	Mouse
Source	E.coli
ProteinLength	Gln962~Glu1215
Form	Freeze-dried powder
Molecular Mass	Predicted Molecular Mass: 33.2kDa
Endotoxin	<1.0EU per 1ug (determined by the LAL method)
Purity	>90%
Applications	SDS-PAGE; WB; ELISA; IP.
Stability	The thermal stability is described by the loss rate. The loss rate was determined by accelerated thermal degradation test, that is, incubate the protein at 37°C for 48h, and no obvious degradation and precipitation were observed. The loss rate is less than 5% within the expiration date under appropriate storage condition.
Storage	Avoid repeated freeze/thaw cycles. Store at 2-8°C for one month. Aliquot and store at

 Tel: 1-631-559-9269 1-516-512-3133

 Email: info@creative-biomart.com  Fax: 1-631-938-8127

 45-1 Ramsey Road, Shirley, NY 11967, USA

-80°C for 12 months.

Storage buffer

Supplied as lyophilized form in 20mM Tris, 150mM NaCl, pH8.0, containing 1mM EDTA, 1mM DTT, 0.01% sarcosyl, 5% trehalose, and preservative.

Reconstitution

Reconstitute in sterile ddH₂O.

Isoelectric Point

4.9

GENE INFORMATION

Gene Name

[Zeb2 zinc finger E-box binding homeobox 2 \[Mus musculus \(house mouse\) \]](#)

Official Symbol

[Zeb2](#)

Synonyms

Zeb2; zinc finger E-box binding homeobox 2; SIP1; Zfx1b; Zfhx1b; Zfxh1b; 9130203F04Rik; D130016B08Rik; zinc finger E-box-binding homeobox 2; smad-interacting protein 1; zinc finger homeobox protein 1b

Gene ID

[24136](#)

mRNA Refseq

[NM_001289521.1](#)

Protein Refseq

[NP_001276450.1](#)

UniProt ID

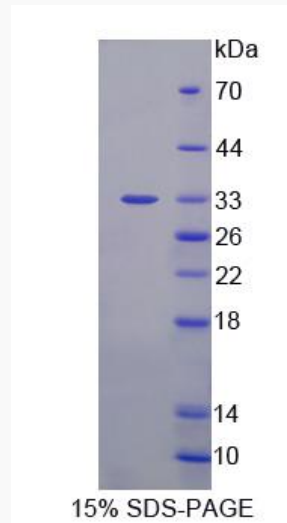
[Q9R0G7](#)

 Tel: 1-631-559-9269 1-516-512-3133

 Email: info@creative-biomart.com  Fax: 1-631-938-8127

 45-1 Ramsey Road, Shirley, NY 11967, USA

SDS-PAGE



 Tel: 1-631-559-9269 1-516-512-3133

 Email: info@creative-biomart.com  Fax: 1-631-938-8127

 45-1 Ramsey Road, Shirley, NY 11967, USA