

## Recombinant Mouse Zeb2 protein, His-tagged

**Cat. No.** Zeb2-1848M    **Lot. No.** (See product label)

### SPECIFICATION

<b>Product Overview</b>	Recombinant Mouse Zeb2(Gln962~Glu1215) fused with N-terminal His tag was produced in E. coli cells.
<b>Species</b>	Mouse
<b>Source</b>	E.coli
<b>ProteinLength</b>	Gln962~Glu1215
<b>Form</b>	20mM Tris, 150mM NaCl, pH8.0, containing 1mM EDTA, 1mM DTT, 0.01% SKL, 5% Trehalose and Proclin300.
<b>Molecular Mass</b>	Predicted Molecular Mass: 33.2kDa; Accurate Molecular: Mass38/33/28kDa(Analysis of differences refer to the manual)
<b>Endotoxin</b>	<1.0EU per 1g (determined by the LAL method)
<b>Purity</b>	> 97%
<b>Applications</b>	Positive Control; Immunogen; SDS-PAGE; WB. If bio-activity of the protein is needed, please check active protein.
<b>Stability</b>	The thermal stability is described by the loss rate. The loss rate was determined by accelerated thermal degradation test, that is, incubate the protein at 37 centigrade for 48h, and no obvious degradation and precipitation were observed. The loss rate is

 Tel: 1-631-559-9269    1-516-512-3133

 Email: [info@creative-biomart.com](mailto:info@creative-biomart.com)     Fax: 1-631-938-8127

 45-1 Ramsey Road, Shirley, NY 11967, USA

less than 5% within the expiration date under appropriate storage condition.

**Storage**

Avoid repeated freeze/thaw cycles. Store at 2-8 centigrade for one month. Aliquot and store at -80 centigrade for 12 months.

**Reconstitution**

Reconstitute in 20mM Tris, 150mM NaCl (pH8.0) to a concentration of 0.1-1.0 mg/mL. Do not vortex.

## GENE INFORMATION

**Gene Name**

Zeb2 zinc finger E-box binding homeobox 2 [ *Mus musculus* ]

**Official Symbol**

Zeb2

**Synonyms**

ZEB2; zinc finger E-box binding homeobox 2; zinc finger E-box-binding homeobox 2; zinc finger homeobox 1b; smad-interacting protein 1; zinc finger homeobox protein 1b; SIP1; Zfx1b; Zfhx1b; Zfxh1b; mKIAA0569; 9130203F04Rik; D130016B08Rik;

**Gene ID**

24136

**mRNA Refseq**

NM\_015753

**Protein Refseq**

NP\_056568

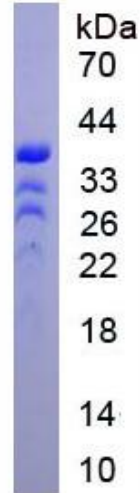
**UniProt ID**

Q9R0G7

 Tel: 1-631-559-9269 1-516-512-3133

 Email: [info@creative-biomart.com](mailto:info@creative-biomart.com)  Fax: 1-631-938-8127

 45-1 Ramsey Road, Shirley, NY 11967, USA



Tel: 1-631-559-9269 1-516-512-3133

Email: [info@creative-biomart.com](mailto:info@creative-biomart.com) Fax: 1-631-938-8127

45-1 Ramsey Road, Shirley, NY 11967, USA