

# Recombinant E. coli Beta-lactamase CTX-M-1 Protein, His-tagged

Cat. No. bla-1146E Lot. No. (See product label)

## SPECIFICATION

<b>Product Overview</b>	Recombinant E. coli (strain K12) Beta-lactamase CTX-M-1 Protein (P28585, 29-291 aa) was expressed in E. coli with N-terminal 6xHis tag.
<b>Species</b>	E.coli
<b>Source</b>	E.coli
<b>ProteinLength</b>	29-291 a.a.
<b>Form</b>	Tris-based buffer, 50% glycerol.
<b>Molecular Mass</b>	32.3 kDa
<b>AA Sequence</b>	QTADVQQKLAELERQSGGRLGVALINTADNSQILYRADERFAMCSTSKVMAVAVL KKSESEPNLLNQRV EIKKSDLVNYNPIAEKHVDGTMSLAELSAAALQYSDNVAMNKLISHVGGPASVTAF RQLGDETFRLDRT EPTLNTAIPGDPRDTPSPRAMAQLRNLTLGKALGDSQRAQLVTWMKGNTTGAASI QAGLPASWVVGDKT GSGDYGTTNDIAVIWPKDRAPLILVTYFTQPQPKAESRRDVLASAAKIVTNGL
<b>Purity</b>	Greater than 90% as determined by SDS-PAGE.
<b>Storage</b>	The shelf life of liquid form is 6 months at -20 centigrade/-80 centigrade. The shelf life

 Tel: 1-631-559-9269 1-516-512-3133

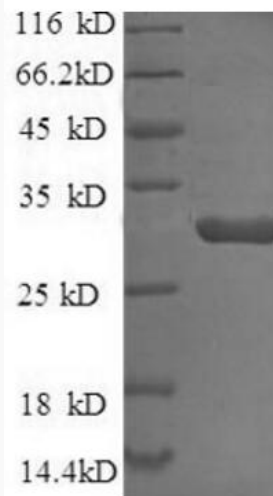
 Email: [info@creative-biomart.com](mailto:info@creative-biomart.com)  Fax: 1-631-938-8127

 45-1 Ramsey Road, Shirley, NY 11967, USA

of lyophilized form is 12 months at -20 centigrade/-80 centigrade.

## GENE INFORMATION

<b>Gene Name</b>	CTX-M-1 Beta-lactamase, CTX-M-1 [ <i>Escherichia coli</i> ]
<b>Official Symbol</b>	<a href="#">bla</a>
<b>Synonyms</b>	Beta-lactamase, CTX-M-1; CTX-M-1; bla; Beta-lactamase
<b>Gene ID</b>	<a href="#">20467196</a>
<b>Protein Refseq</b>	<a href="#">YP_009061062.1</a>
<b>UniProt ID</b>	<a href="#">P28585</a>



 Tel: 1-631-559-9269 1-516-512-3133

 Email: [info@creative-biomart.com](mailto:info@creative-biomart.com)  Fax: 1-631-938-8127

 45-1 Ramsey Road, Shirley, NY 11967, USA