

Recombinant Human Carbomylated Erythropoietin

Cat. No. cEPO-01H Lot. No. (See product label)

SPECIFICATION

Species	Human
Source	CHO
Description	The mature protein consists of a 165-amino acid polypeptide chain, heavily glycosylated at three N-linked and one O-linked glycosylation site, resulting in a total molecular weight of 35–45 kDa. On average, 40% of the amine sites on each EPO molecule are carbomylated.
Purity	> 95% by SDS-PAGE
Labeling Efficiency	Based on a 45% decrease in A280 signal, the estimated extent of carbomylation was ~65% of the available primary amine sites (approximately 23 sites per EPO molecule)
Storage	Store it under sterile conditions at -20 to -80 centigrade. It is recommended that the protein be aliquoted for optimal storage. Avoid repeated freeze-thaw cycles.
Storage Buffer	Sterile PBS, pH7.4
Concentration	1.6 mg/mL

GENE INFORMATION

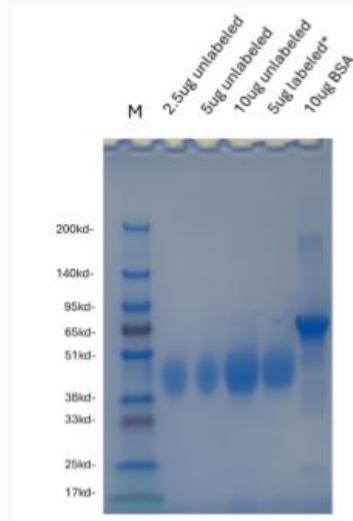
Gene Name	EPO erythropoietin [Homo sapiens (human)]
------------------	---

 Tel: 1-631-559-9269 1-516-512-3133

 Email: info@creative-biomart.com  Fax: 1-631-938-8127

 45-1 Ramsey Road, Shirley, NY 11967, USA

Official Symbol	EPO
Synonyms	EPO; erythropoietin; EP; epoetin; MVCD2; MGC138142;
Gene ID	2056
mRNA Refseq	NM_000799
Protein Refseq	NP_000790
MIM	133170
UniProt ID	P01588

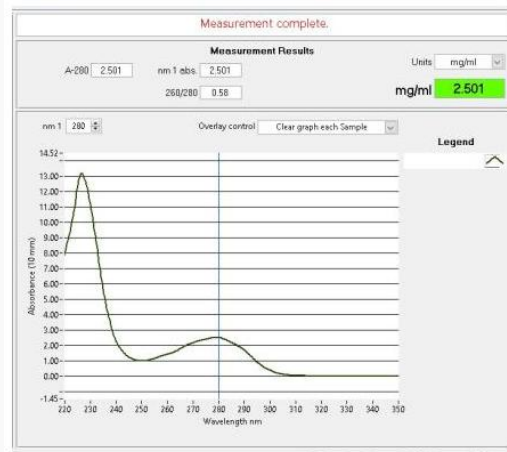
SDS-PAGE


Tel: 1-631-559-9269 1-516-512-3133

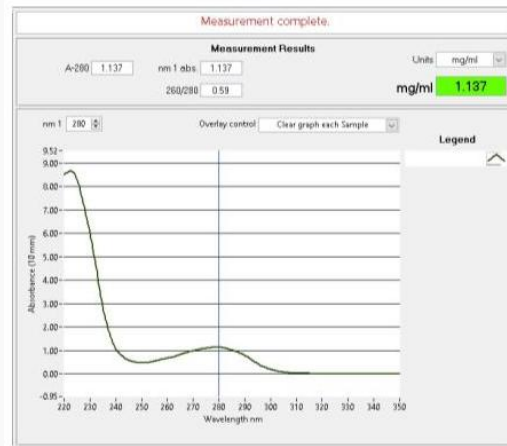
Email: info@creative-biomart.com Fax: 1-631-938-8127

45-1 Ramsey Road, Shirley, NY 11967, USA

**Before label (280nm,
400ul)**



**After label (280nm,
500ul)**



Tel: 1-631-559-9269 1-516-512-3133

Email: info@creative-biomart.com Fax: 1-631-938-8127

45-1 Ramsey Road, Shirley, NY 11967, USA