

## Recombinant Acidaminococcus sp. (strain BV3L6) cas12a protein, His&Myc-tagged

**Cat. No.** cas12a-4632A    **Lot. No.** (See product label)

### SPECIFICATION

<b>Product Overview</b>	Recombinant Acidaminococcus sp. (strain BV3L6) cas12a protein(U2UMQ6)(1-1307aa), fused with N-terminal His tag and C-terminal Myc tag, was expressed in E.coli.
<b>Species</b>	Acidaminococcus sp. (strain BV3L6)
<b>Source</b>	E.coli
<b>ProteinLength</b>	1-1307a.a.
<b>Tag</b>	His&Myc
<b>Form</b>	If the delivery form is liquid, the default storage buffer is Tris/PBS-based buffer, 5%-50% glycerol. If the delivery form is lyophilized powder, the buffer before lyophilization is Tris/PBS-based buffer, 6% Trehalose, pH 8.0.
<b>Molecular Mass</b>	158.6 kDa
<b>Purity</b>	Greater than 90% as determined by SDS-PAGE.
<b>Storage</b>	Store at -20°C/-80°C upon receipt, aliquoting is necessary for mutiple use. Avoid repeated freeze-thaw cycles.
<b>Reconstitution</b>	We recommend that this vial be briefly centrifuged prior to opening to bring the

 Tel: 1-631-559-9269    1-516-512-3133

 Email: [info@creative-biomart.com](mailto:info@creative-biomart.com)     Fax: 1-631-938-8127

 45-1 Ramsey Road, Shirley, NY 11967, USA



contents to the bottom. Please reconstitute protein in deionized sterile water to a concentration of 0.1-1.0 mg/mL. We recommend to add 5-50% of glycerol (final concentration) and aliquot for long-term storage at -20°C/-80°C.

**AA Sequence**

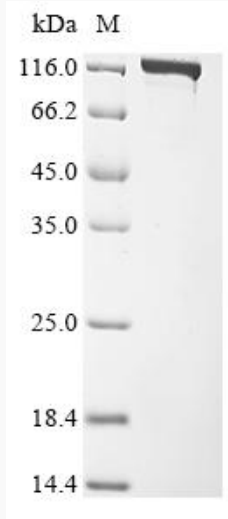
MTQFEGFTNLYQVSKTLRFELIPQGKTLKHIQEQGFIEEDKARNDHYKELKPIIDRIYK  
TYADQCLQLVQLDWENLSAAIDSYRKEKTEETRNALIEEQATYRNAIHDFYFIGRTDNL  
TDAINKRHAEIYKGLFKAELFNGKVLKQLGTVTTTEHENALLRSFDKFTTYFSGFYEN  
RKNVFAEDISTAIPHRIVQDNFPKFKENCHIFTRLITAVPSLREHFENVKKAIGIFVST  
SIEEVFSFPFYNQLLTQTQIDLYNQLLGGISREAGTEKIKGLNEVLNLAIQKNDETAHII  
ASLPHRFIPLFKQILSDRNTLSFILEEFKSDEEVIQSFCKYKTLRNENVLETAEALFNE  
LNSIDLTHIFISHKKLETISSALCDHWDTLRNALYERRISELTGKITKSAKEKVQRSLKH  
EDINLQEIISAAGKELSEAFKQKTSEILSHAAALDQPLPTTLKKQEEKEILKSQQLDSSL  
GLYHLLDWFVAVDESNEVDPEFSARLTGIKLEMEPSLSFYNKARNYATKKPYSVEKFK  
LNFQMPTLASGWDVNKEKNNGAILFVKNGLYYLGIMPKQKGRYKALSFEPTSE  
GFDKMYDYFPDAAKMIPKCSTQLKAVTAHFQTHHTPILLSNNFIEPLEITKEIYDLNN  
PEKEPKKFQTAYAKKTGDQKGYREALCKWIDFTRDFLSKYTKTTSIDLSSLRPSSQY  
KDLGEYYAELNPLLYHISFQRIAEKEIMDAVETGKLYLFQIYNKDFAKGHHGKPNLHT  
LYWTGLFSPENLAKTSIKLNGQAELFYRPKSRMKRMAHRLGEKMLNKKLKDQKTPIP  
DTLYQELYDYVNHRLSHDLSDEARALLPNVITKEVSHEIHKDRRFTSDKFFFHVPITLN  
YQAANSPSKFNQRVNAYLKEHPETPIIGIDRGERNLIYITVIDSTGKILEQRSLNTIQQF  
DYQKKLDNREKERVAAARQAWSVVGTIKDLKQGYLSQVIHEIVDLMIHYQAVVVLENL  
NFGFKSKRTGIAEKAVYQQFEKMLIDKLNCLVLKDYPAEKVGGLNPNYQLTDQFTSF  
AKMGTQSGFLFYVPAPYTSKIDPLTGFVDPFVWKTIKNHESRKHFLGFDLHYDVK  
TGDFILHFKMNRNLSFQRGLPGFMPAWDIVFEKNETQFDAKGPPIAGKRIVPVIEHN  
RFTGRYRDLYPANELIALLEEKGIVFRDGSNILPKLLENDSDHAIDTMVALIRSVLQMR  
NSNAATGEDYINSPVRDLNGVCFDSRFQNPPEWPMADANGAYHIALKGQLLLNHLK  
ESKDLKLQNGISNQDWLAYIQELRN

Tel: 1-631-559-9269 1-516-512-3133

Email: [info@creative-biomart.com](mailto:info@creative-biomart.com) Fax: 1-631-938-8127

45-1 Ramsey Road, Shirley, NY 11967, USA

**SDS-PAGE**



 Tel: 1-631-559-9269 1-516-512-3133

 Email: [info@creative-biomart.com](mailto:info@creative-biomart.com)  Fax: 1-631-938-8127

 45-1 Ramsey Road, Shirley, NY 11967, USA