

# Recombinant Full Length Escherichia phage p1 cyclization recombinase Protein, His tagged

Cat. No. cre-119E Lot. No. (See product label)

## SPECIFICATION

<b>Product Overview</b>	Recombinant human Recombinase cre protein (P06956) (Met 1-Asp 343) with a His tag at the C-terminus was expressed in E. coli.
<b>Species</b>	Escherichia phage p1
<b>Source</b>	E.coli
<b>ProteinLength</b>	1-343aa
<b>Description</b>	Catalyzes site-specific recombination between two 34-base-pair LOXP sites. Its role is to maintain the phage genome as a monomeric unit-copy plasmid in the lysogenic state.
<b>Tag</b>	C-His
<b>Molecular Mass</b>	40.2 kDa
<b>Endotoxin</b>	Less than 1.0 EU/μg by the LAL method.
<b>Purity</b>	>95% as determined by SDS-PAGE.
<b>Storage</b>	Please avoid repeated freeze-thaw cycles. Samples are stable for up to twelve months from date of receipt at -20 to -80 centigrade. It is recommended that aliquot the reconstituted solution to minimize freeze-thaw cycles.

 Tel: 1-631-559-9269 1-516-512-3133

 Email: [info@creative-biomart.com](mailto:info@creative-biomart.com)  Fax: 1-631-938-8127

 45-1 Ramsey Road, Shirley, NY 11967, USA

**Storage Buffer** Lyophilized from a 0.2 µm filtered solution of PBS, pH7.4, 5% Trehalose, 5% mannitol.

**Reconstitution** Reconstitute at 250 µg/mL in sterile water.

## GENE INFORMATION

**Gene Name** [cre cyclization recombinase \[ Escherichia phage P1 \]](#)

**Official Symbol** [cre](#)

**Synonyms** cre; cyclization recombinase; site-specific integrase; 24 pct identical to 351 aa integrase-like protein of Pseudomonas sp. in GenBank Accession Number CAA67462; similar to other bacterial integrases-recombinases

**Gene ID** [2777477](#)

**Protein Refseq** [YP\\_006472.1](#)

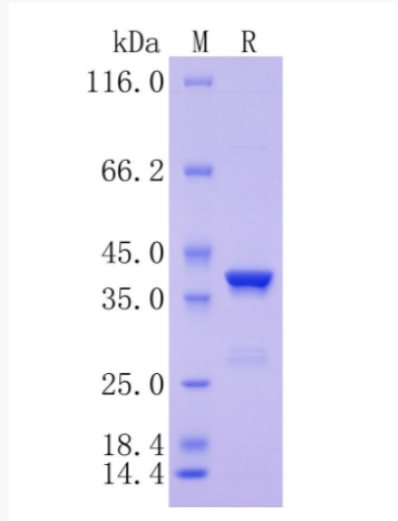
**UniProt ID** [P06956](#)

 Tel: 1-631-559-9269 1-516-512-3133

 Email: [info@creative-biomart.com](mailto:info@creative-biomart.com)  Fax: 1-631-938-8127

 45-1 Ramsey Road, Shirley, NY 11967, USA

**Protein on SDS-  
PAGE under  
reducing (R)  
condition.**



 Tel: 1-631-559-9269 1-516-512-3133

 Email: [info@creative-biomart.com](mailto:info@creative-biomart.com)  Fax: 1-631-938-8127

 45-1 Ramsey Road, Shirley, NY 11967, USA