

# Recombinant *Bacillus thuringiensis* cry1Ab Protein, His-tagged

**Cat. No.** cry1Ab-01B    **Lot. No.** (See product label)

## SPECIFICATION

<b>Product Overview</b>	Recombinant <i>Bacillus Thuringiensis</i> Cry1Ab Protein (1022-1155aa) with a N-terminal 6xHis tag was expressed in <i>E. coli</i> .
<b>Species</b>	<i>Bacillus thuringiensis</i>
<b>Source</b>	<i>E. coli</i>
<b>ProteinLength</b>	1022-1155 a.a.
<b>Description</b>	Promotes colloidosmotic lysis by binding to the midgut epithelial cells of lepidopteran ( <i>Manduca sexta</i> ) larvae.
<b>Molecular Mass</b>	17.3 kDa
<b>AA Sequence</b>	HEIENNTDELKFSNCVVEEVYPNNTVTCNDYTATQEEYEGTYTSRNRGYDGAYESN SSVPADYASAYEEKAYTDGRRDNPCESNRGYGDYTPLPAGYVTKLEYFPETDKV WIEIGETEGTFIVDSVELLLMEE
<b>Purity</b>	>90% as determined by SDS-PAGE.

## GENE INFORMATION

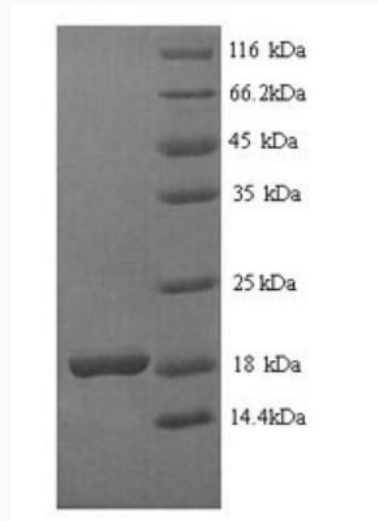
<b>Gene Name</b>	BTHUR0008_RS31135 insecticidal delta-endotoxin Cry8Ea1 family protein [ <i>Bacillus thuringiensis</i> serovar berliner ATCC 10792 ]
------------------	---

 Tel: 1-631-559-9269    1-516-512-3133

 Email: [info@creative-biomart.com](mailto:info@creative-biomart.com)     Fax: 1-631-938-8127

 45-1 Ramsey Road, Shirley, NY 11967, USA

<b>Official Symbol</b>	<a href="#">cry1Ab</a>
<b>Synonyms</b>	BTHUR0008_RS31135; insecticidal delta-endotoxin Cry8Ea1 family protein; insecticidal delta-endotoxin Cry8Ea1 family protein; cry1Ab
<b>Gene ID</b>	<a href="#">67470639</a>
<b>Protein Refseq</b>	<a href="#">WP_000369819</a>
<b>UniProt ID</b>	<a href="#">P0A370</a>

**SDS-PAGE**

 Tel: 1-631-559-9269 1-516-512-3133

 Email: [info@creative-biomart.com](mailto:info@creative-biomart.com)  Fax: 1-631-938-8127

 45-1 Ramsey Road, Shirley, NY 11967, USA