

# Recombinant Enhanced Green Fluorescent Protein, N-His and C-MYC tagged

**Cat. No.** eGFP-02    **Lot. No.** (See product label)

## SPECIFICATION

**Product Overview**

Dual-tagged, recombinant enhanced Green Fluorescent Protein (eGFP, FPbase ID: R9NL8) produced in planta. Contains an N-terminal His-tag, followed by the TEV protease recognition and cleavage site (ENLYFQ|G), eGFP peptide and a C-terminal c-myc tag;

Excitation: 488 nm  
Emission: 509 nm  
Isoelectric Point: 5.925

**Source**                      Plant bioreactor fresh leaf tissue

**ProteinLength**            275AA

**Molecular Mass**         31.2 kDa

**AA Sequence**

MASRSHHHHHHDNKQENLYFQGVSKGEELFTGVVPILVELDGDVNGHKFSVSGE  
GEGDATYGKLTCLKFICTTGKLPVPWPTLVTTLTLYGVQCFSRYPDHMKQHDFKFSAM  
PEGYVQERTIFFKDDGNYKTRAEVKFEGDTLVNRIELKGIDFKEDGNILGHKLEYNYN  
SHNVYIMADKQKNGIKVNFKIRHNIEDGSVQLADHYQQNTPIGDGPVLLPDNHYLST  
QSALSKDPNEKRDHMLLEFVTAAGITLGMDELYKEPALEQKLISEEDL

**Purity**                      >91% pure (by SDS-PAGE, RP-HPLC)

**Applications**             SDS-PAGE, Western blots, fluorescence microscopy, fluorometry, ELISA.

 Tel: 1-631-559-9269    1-516-512-3133

 Email: [info@creative-biomart.com](mailto:info@creative-biomart.com)     Fax: 1-631-938-8127

 45-1 Ramsey Road, Shirley, NY 11967, USA

**Storage**

Lyophilized protein can be stored in a desiccator at -20 or -80 centigrade for at least 1 year.

After reconstitution, aliquot and store at -20 centigrade.

Avoid freeze-thaw cycles.

**Storage Buffer**

Lyophilized in sterile conditions from a concentrated, 0.22 µm-filtered solution in PBS, pH=7.4.

**Reconstitution**

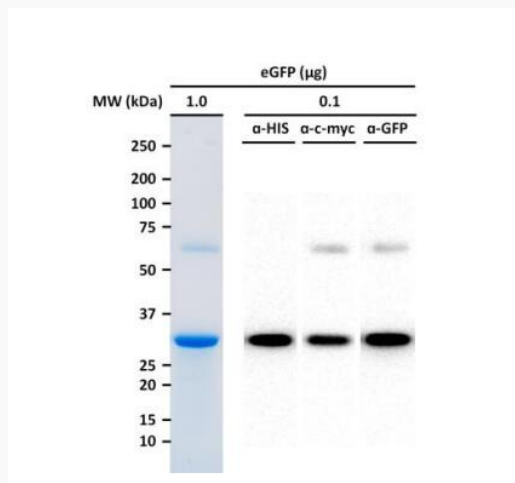
Reconstitute with pure H<sub>2</sub>O or 1×PBS to a desired concentration, aliquote and store at -20 centigrade for up to 6 months. Store at -80 centigrade for longer periods. Avoid repeated freeze / thaw cycles.

## GENE INFORMATION

**Official Symbol** eGFP

**Synonyms** eGFP; Enhanced Green Fluorescent Protein

## SDS-PAGE



Tel: 1-631-559-9269 1-516-512-3133

Email: [info@creative-biomart.com](mailto:info@creative-biomart.com) Fax: 1-631-938-8127

45-1 Ramsey Road, Shirley, NY 11967, USA