

# Recombinant Enhanced Yellow Fluorescent Protein, N-His and C-MYC tagged

**Cat. No.** eYFP-03    **Lot. No.** (See product label)

## SPECIFICATION

<b>Product Overview</b>	<p>Dual-tagged, recombinant enhanced Yellow Fluorescent Protein (eYFP, FPbase ID: 8DNLG). Contains an N-terminal His-tag, followed by the TEV protease recognition and cleavage site (ENLYFQ G), eYFP peptide and a C-terminal c-myc tag;</p> <p>Excitation: 513 nm Emission: 527 nm Isoelectric Point: 5.925</p>
<b>Source</b>	Plant bioreactor fresh leaf tissue
<b>ProteinLength</b>	275AA
<b>Molecular Mass</b>	31.3 kDa
<b>AA Sequence</b>	<p>MASRSHHHHHHDNKQENLYFQGVSKGEELFTGVVPILVELDGDVNGHKFSVSGE GEGDATYGKLTCLKFICTTGKLPVPWPTLVTTLTYGVCFSRYPDHMKQHDFFKSAM PEGYVQERTIFFKDDGNYKTRAEVKFEGDTLVNRIELKGIDFKEDGNILGHKLEYNYN SHNVYIMADKQKNGIKVNFKIRHNIEDGSVQLADHYQQNTPIGDGPVLLPDNHYLST QSALSKDPNEKRDHMLLEFVTAAGITLGMDELYKEPALEQKLISEEDL</p>
<b>Purity</b>	>85% pure (by SDS-PAGE, RP-HPLC)
<b>Applications</b>	SDS-PAGE, Western blots, fluorescence microscopy, fluorometry, ELISA.
<b>Storage</b>	Lyophilized protein can be stored in a desiccator at -20 or -80 centigrade for at least 1

 Tel: 1-631-559-9269    1-516-512-3133

 Email: [info@creative-biomart.com](mailto:info@creative-biomart.com)     Fax: 1-631-938-8127

 45-1 Ramsey Road, Shirley, NY 11967, USA

year.  
 After reconstitution, aliquot and store at -20 centigrade.  
 Avoid freeze-thaw cycles.

**Storage Buffer**

Lyophilized in sterile conditions from a concentrated, 0.22 µm-filtered solution in PBS, pH=7.4.

**Reconstitution**

Reconstitute with pure H<sub>2</sub>O or 1×PBS to a desired concentration, aliquote and store at -20 centigrade for up to 6 months. Store at -80 centigrade for longer periods. Avoid repeated freeze / thaw cycles.

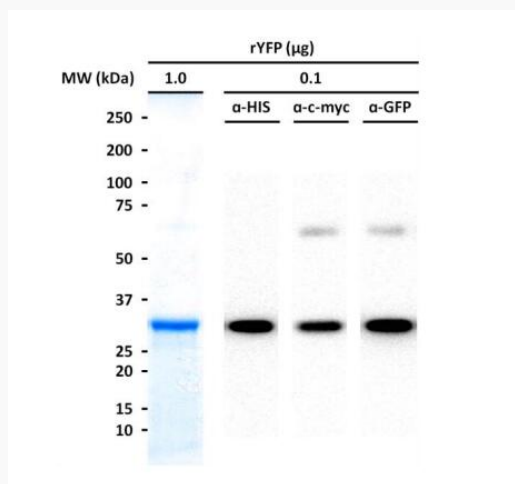
## GENE INFORMATION

**Official Symbol**

eYFP

**Synonyms**

eYFP; Enhanced Yellow Fluorescent Protein

**SDS-PAGE**


Tel: 1-631-559-9269 1-516-512-3133

Email: [info@creative-biomart.com](mailto:info@creative-biomart.com) Fax: 1-631-938-8127

45-1 Ramsey Road, Shirley, NY 11967, USA