

# Recombinant Human herpesvirus 2 (strain HG52) gB protein, His-tagged

Cat. No. gB-5732H Lot. No. (See product label)

## SPECIFICATION

<b>Product Overview</b>	Recombinant Human herpesvirus 2 (strain HG52) gB protein(P08666)(23-904aa), fused with N-terminal His tag, was expressed in vitro E.coli expression system.
<b>Species</b>	Human herpesvirus 2
<b>Source</b>	E.coli
<b>ProteinLength</b>	23-904aa
<b>Tag</b>	N-His
<b>Form</b>	If the delivery form is liquid, the default storage buffer is Tris/PBS-based buffer, 5%-50% glycerol. If the delivery form is lyophilized powder, the buffer before lyophilization is Tris/PBS-based buffer, 6% Trehalose, pH 8.0.
<b>Molecular Mass</b>	99.7 kDa
<b>Purity</b>	Greater than 85% as determined by SDS-PAGE.
<b>Storage</b>	Store at -20°C/-80°C upon receipt, aliquoting is necessary for mutiple use. Avoid repeated freeze-thaw cycles.
<b>Reconstitution</b>	We recommend that this vial be briefly centrifuged prior to opening to bring the contents to the bottom. Please reconstitute protein in deionized sterile water to a

 Tel: 1-631-559-9269 1-516-512-3133

 Email: [info@creative-biomart.com](mailto:info@creative-biomart.com)  Fax: 1-631-938-8127

 45-1 Ramsey Road, Shirley, NY 11967, USA

concentration of 0.1-1.0 mg/mL. We recommend to add 5-50% of glycerol (final concentration) and aliquot for long-term storage at -20°C/-80°C.

**AA Sequence**

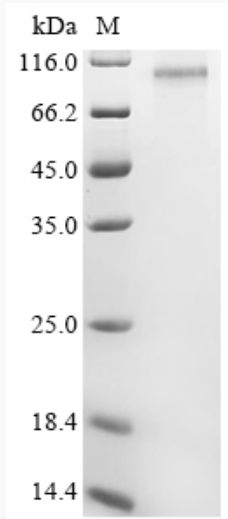
APAAPAAPRASGGVAATVAANGGPASRPPVPSPATTKARKRKTCKPPKRPEATPP  
PDANATVAAGHATLRAHLREIKVENADAQFYVCPPTGATVVQFEQPRRCPTRPEG  
QNYTEGIAVVFKENIAPYKFKATMYYKDVTVSQVWFGHRYSQFMGIFEDRAPVPFEE  
VIDKINTKGVCRSTAKYVRNNMETTAFHRDDHETDMELKPAKVATRTRSRGWHTTDL  
KYNPSRVEAFHRYGTTVNCIVEEVDARSVYPYDEFVLATGDFVYMSPFYGYREGSH  
TEHTSYAADRFKQVDGFYARDLTTKARATSPTTRNLLTTPKFTVAWDWVPKRPAVC  
TMTKWQEVDEMLRAEYGGSRFRSSDAISTTFTTNLTEYSLSRVDLGDCIGRDAREAI  
DRMFARKYNATHIKVGQPQYYLATGGFLIAYQPLLSNTLAELYVREYMREQDRKPR  
NATPAPLREAPSANASVERIKTTSSIEFARLQFTYNHIQRHVNDMLGRIAVAWCELQN  
HELTLWNEARKLNPNAIASATVGRRVSARMLGDVMAVSTCVVPVAPDNVIVQNSMRV  
SSRPGTCYSRPLVSFRYEDQGPLIEGQLGENNELRLTRDALEPCTVGHRRYFIFGG  
GYVYFEEYAYSHQLSRADVTTVSTFIDLNITMLEDHEFVPLEVYTRHEIKDSGLLDYT  
EVQRRNQLHDLRFADIDTVIRADANAAMFAGLCAFFEGMGDLGRAVGKVVMGVVG  
GVVSAVSGVSSFMSNPFALAVGLLVLAGLVAAFFAFRYVLQLQRNPMKALYPLTTK  
ELKTSDPGGVGGEGEEGAEGGGFDEAKLAEAREMIRYMALVSAMERTEHKARKKG  
TSALLSSKVTNMVLRKRKARYSPLHNEDEAGDEDEL-

 Tel: 1-631-559-9269 1-516-512-3133

 Email: [info@creative-biomart.com](mailto:info@creative-biomart.com)  Fax: 1-631-938-8127

 45-1 Ramsey Road, Shirley, NY 11967, USA

**SDS-PAGE**



 Tel: 1-631-559-9269 1-516-512-3133

 Email: [info@creative-biomart.com](mailto:info@creative-biomart.com)  Fax: 1-631-938-8127

 45-1 Ramsey Road, Shirley, NY 11967, USA