

## Recombinant SIVsmE660 gp120 Protein, His-tagged

Cat. No. gp120-01S Lot. No. (See product label)

### SPECIFICATION

<b>Product Overview</b>	Recombinant SIVsmE660 gp120 protein (a.a.18-533) with C-terminal 6xHis tag was purified from 293 cell culture.
<b>Species</b>	SIVsmE660
<b>Source</b>	HEK293
<b>ProteinLength</b>	18-533 a.a.
<b>Description</b>	Simian immunodeficiency virus (SIV) of chimpanzees (Pan troglodytes) (SIVcpz) is now well established as the origin of the human immunodeficiency virus (HIV)-1 pandemic
<b>Purity</b>	> 95%
<b>Applications</b>	Antibody ELISA, protein labeling, etc
<b>Storage</b>	Keep it at 4 centigrade if used within a month. For long term storage, split it into small aliquots and keep at -80 centigrade. Avoid repeated freezing and thawing. The product will be expired one year after receiving if stored properly. Non-hazardous. No MSDS required.
<b>Storage Buffer</b>	Each vial contains 50 µg of biotinylated protein (0.5 mg/mL) in PBS+40% glycerol

### GENE INFORMATION

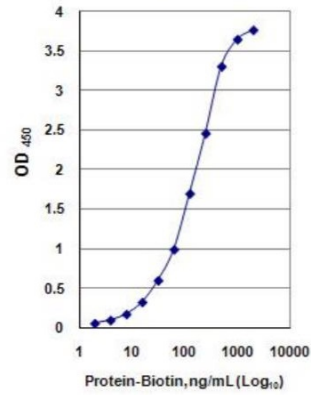
 Tel: 1-631-559-9269 1-516-512-3133

 Email: [info@creative-biomart.com](mailto:info@creative-biomart.com)  Fax: 1-631-938-8127

 45-1 Ramsey Road, Shirley, NY 11967, USA

**Official Symbol** gp120

**Synonyms** gp120



 Tel: 1-631-559-9269 1-516-512-3133

 Email: [info@creative-biomart.com](mailto:info@creative-biomart.com)  Fax: 1-631-938-8127

 45-1 Ramsey Road, Shirley, NY 11967, USA