

Recombinant SIVsmE660 gp140 Protein, His-tagged, Biotin labeled

Cat. No. gp140-01S **Lot. No.** (See product label)

SPECIFICATION

Product Overview	Recombinant gp140 (SIVsmE660) protein (a.a.18-700) Biotin labeled C-terminal 6xHis tagged was purified from 293 cell culture.
Species	SIVsmE660
Source	HEK293
ProteinLength	18-700 a.a.
Description	Simian immunodeficiency virus (SIV) of chimpanzees (Pan troglodytes) (SIVcpz) is now well established as the origin of the human immunodeficiency virus (HIV)-1 pandemic
Purity	> 95%
Applications	Antibody ELISA, protein labeling, etc
Storage	Keep it at 4 centigrade if used within a month. For long term storage, split it into small aliquots and keep at -80 centigrade. Avoid repeated freezing and thawing. The product will be expired one year after receiving if stored properly. Non-hazardous. No MSDS required.
Storage Buffer	Each vial contains 50 µg of biotinylated protein (0.5 mg/mL) in PBS+40% glycerol

 Tel: 1-631-559-9269 1-516-512-3133

 Email: info@creative-biomart.com  Fax: 1-631-938-8127

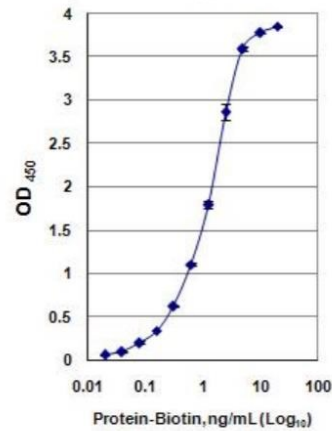
 45-1 Ramsey Road, Shirley, NY 11967, USA

Conjugation Biotin

GENE INFORMATION

Official Symbol gp140

Synonyms gp140



 Tel: 1-631-559-9269 1-516-512-3133

 Email: info@creative-biomart.com  Fax: 1-631-938-8127

 45-1 Ramsey Road, Shirley, NY 11967, USA