

Recombinant *Francisella tularensis* subsp. *holarctica* (strain LVS) groEL protein, His-tagged

Cat. No. groEL-4571F Lot. No. (See product label)

SPECIFICATION

Product Overview	Recombinant <i>Francisella tularensis</i> subsp. <i>holarctica</i> (strain LVS) groEL protein(P94798)(184-376 aa), fused with C-terminal His tag, was expressed in <i>E.coli</i> .
Species	<i>Francisella tularensis</i> subsp. <i>holarctica</i> (strain LVS)
Source	<i>E.coli</i>
ProteinLength	184-376 aa
Form	For liquid formulations, the standard storage buffer consists of a Tris or PBS based solution supplemented with 5-50% glycerol. When provided as lyophilized powder, the product undergoes freeze-drying from a Tris- or PBS-based formulation containing 6% trehalose, adjusted to pH 8.0 prior to the lyophilization process.
Molecular Mass	28.1 kDa
AASequence	EDEL DVVEGMQFDRGYLSPYFATNQENMTTDLENPYILIVDKKISNIRDLLPILEGVSK SGRALLIIAEDVESEALATLVVNNMRGVVVKCAVKAPGFGDRRKAMLEDIATLTGATF VSEDLSMKLEETNMEHLGTASRVQVTKDNNTTIIDGAGEKEAIAKRINVIKANIAEANS YDREKLQERLAKLSSGGV
Purity	Greater than 95% as determined by SDS-PAGE.
Storage	Store at -20°C/-80°C upon receipt, aliquoting is necessary for multiple use. Avoid

 Tel: 1-631-559-9269 1-516-512-3133

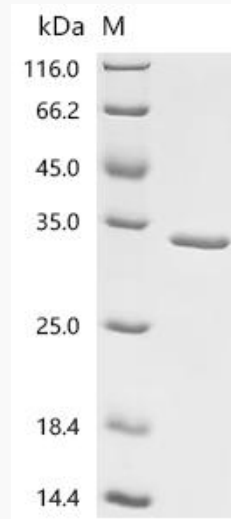
 Email: info@creative-biomart.com  Fax: 1-631-938-8127

 45-1 Ramsey Road, Shirley, NY 11967, USA

repeated freeze-thaw cycles.

Reconstitution

Please reconstitute protein in deionized sterile water to a concentration of 0.1-1.0 mg/mL. Aliquot for long-term storage at -80°C.

SDS-PAGE

 Tel: 1-631-559-9269 1-516-512-3133

 Email: info@creative-biomart.com  Fax: 1-631-938-8127

 45-1 Ramsey Road, Shirley, NY 11967, USA