

# Recombinant *Francisella tularensis* groL antigen, His-tagged

Cat. No. groL-09F Lot. No. (See product label)

## SPECIFICATION

<b>Product Overview</b>	Recombinant <i>Francisella tularensis</i> groL antigen with a His-tag was expressed in <i>E. coli</i>
<b>Species</b>	<i>Francisella tularensis</i>
<b>Source</b>	<i>E. coli</i>
<b>Description</b>	<i>Francisella tularensis</i> is a gram-negative bacteria (Gram-negative bacteria contain an outer membrane outside the peptidoglycan cell wall, unlike Gram-positive bacteria that have a thicker layer of cell wall and no outer membrane. Many of the Gram-negative bacteria are pathogenic), with pili on the surface. It is nonmotile, aerobic, and non-spore forming bacteria. In nature, it can survive up to weeks at low temperatures in water, soil, and animal carcasses. In laboratory settings, <i>Francisella tularensis</i> appears as small rods (0.2 by 0.2 $\mu$ m), and is grown best at 35-37 degrees Celcius.
<b>Molecular Mass</b>	The protein has a calculated MW of 59.7 kDa.
<b>AA Sequence</b>	MGSSHHHHHHSSGLVPRGSHMMAAKQVLFSDEARAKMLDGVNTLANAVKVTLGPK GRNVVLDKSFGTPTITKDGVSVAKEIELEDKFENMGAQIVKEVASKTADVAGDGTTT ATVLAQALLTEGLKAVAAGMNPMDLKRIGDKATARLVEELKALS KPCSDPKSIEQVG TISANS DATV GKL IADAMAKVGKEGVITVEEGKGFEDLDVVEGMQFDRGYLSPYFA TNQENMTTDLENPYILIVDKKISNIRDLLPILEGVSKSGRALLIAEDVESEALATLVVNN MRGVVKVCAVKAPGFGDRRKAMLEDIATLTGATFVSEDLSMKLEETNMEHLGTASR

 Tel: 1-631-559-9269 1-516-512-3133

 Email: [info@creative-biomart.com](mailto:info@creative-biomart.com)  Fax: 1-631-938-8127

 45-1 Ramsey Road, Shirley, NY 11967, USA

VQVTKDNNTTIIDGAGEKEAIAKRINVIKANIAEANSYDREKLQERLAKLSGGVAVIKV  
 GAVTEAEMKEKKDRVDDALHATRAAVEEGIVAGGGVALIRAQKALDGLTGENDDQNN  
 YGIALLRKAIEAPLRQIVSNAGGESSVVVNQVKANQGNYGYNAANDTYGDMVEMGIL  
 DPTKVTRSALQHAASIAGLMITTEAMIGEIKEAAPAMPMPGGGMGGMPGMM

**Purity** >90% by SDS-PAGE

**Storage** Store it under sterile conditions at -20 to -80 centigrade. It is recommended that the protein be aliquoted for optimal storage. Avoid repeated freeze-thaw cycles.

**Concentration** 0.5 mg/mL

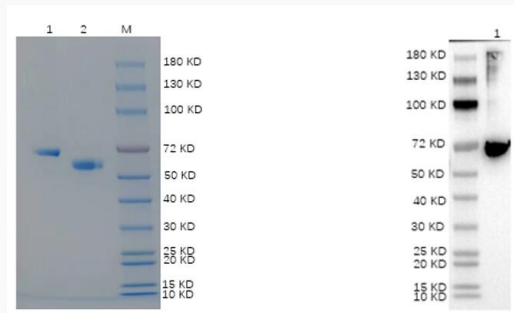
**Storage Buffer** PBS, pH 7.4, 0.05% SKL

## GENE INFORMATION

**Official Symbol** groL

**Synonyms** groL

### SDS-PAGE:



Reducing 12% SDS-PAGE and WB analysis profile of purified *Francisella tularensis* groL antigen

Tel: 1-631-559-9269 1-516-512-3133

Email: [info@creative-biomart.com](mailto:info@creative-biomart.com) Fax: 1-631-938-8127

45-1 Ramsey Road, Shirley, NY 11967, USA



1. BSA
2. Francisella tularensis groL antigen

 Tel: 1-631-559-9269 1-516-512-3133

 Email: [info@creative-biomart.com](mailto:info@creative-biomart.com)  Fax: 1-631-938-8127

 45-1 Ramsey Road, Shirley, NY 11967, USA