

# Recombinant Ricinus communis groL antigen, His-tagged

Cat. No. groL-52R Lot. No. (See product label)

## SPECIFICATION

<b>Product Overview</b>	Recombinant Ricinus communis groL antigen with a His-tag was expressed in E. coli
<b>Species</b>	Ricinus communis
<b>Source</b>	E.coli
<b>Description</b>	Ricinus communis is a monotypic species containing up to 60% unique oil, 90% of it being ricinoleic acid (12-C hydroxyoleic acid).
<b>Molecular Mass</b>	The protein has a calculated MW of 54.7 kDa.
<b>AA Sequence</b>	<p>MGSSHHHHHSSGLVPRGSHMRTALQSGIDKLADAVGLTLGPRGRNVVLDEFGSP            KVVNEGVTIARAIELPDPMENAGAALIREVASKTNSAGDGTTTASVLAREIIKLGLLS            VTSGANPVSIKRGIDKTVQGLIEELEKKARPVKGRDDIKAVASISAGNDELIGTMIADAI            DKVGPDGVLSIESSSSFETTVEVEEGMEIDRGYISPQFVTNPEKLICEFENARVLVTD            QKITAIKDIIPLEKTTQLRAPLLIAEDVTGEALATLVVNKMRGILNVAAIKAPGFGERR            KALLQDIAILTGAEFQASDLGLLVENTSVEQLGIARKVTITKDSTTLIADAASKDELQAR            IAQLKRELAETDSVYDSEKLAERIAKLSGGVAVIKVGAATETELEDKRLRIEDAKNATF            AAIEEGIVPGGGAALVHLSTVPAINGEDKDADERLGADILQKALVAPASLIAQNAGIE            GEVVVEKVKAREWEIGYNAMTDKYENLVEAGVIDPAKVTRCALQN</p>
<b>Purity</b>	>90% by SDS-PAGE
<b>Storage</b>	Store it under sterile conditions at -20 to -80 centigrade. It is recommended that the protein be aliquoted for optimal storage. Avoid repeated freeze-thaw cycles.

Tel: 1-631-559-9269 1-516-512-3133

Email: [info@creative-biomart.com](mailto:info@creative-biomart.com) Fax: 1-631-938-8127

45-1 Ramsey Road, Shirley, NY 11967, USA

**Concentration** 0.75 mg/mL

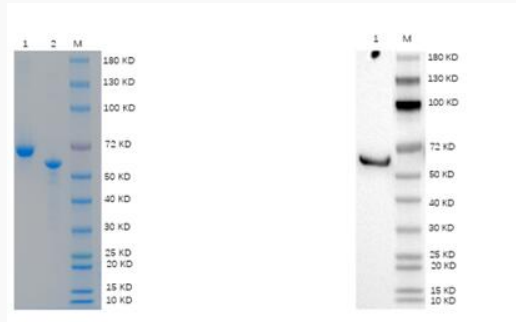
**Storage Buffer** 25mM Tris, 150mM NaCl, 2mM DTT, 10% Glycerol

## GENE INFORMATION

**Official Symbol** groL

**Synonyms** groL

### SDS-PAGE:



Reducing 12% SDS-PAGE and WB analysis profile of purified Ricinus communis groL antigen

1. BSA
2. Ricinus communis groL antigen

 Tel: 1-631-559-9269 1-516-512-3133

 Email: [info@creative-biomart.com](mailto:info@creative-biomart.com)  Fax: 1-631-938-8127

 45-1 Ramsey Road, Shirley, NY 11967, USA