

Recombinant Lacticaseibacillus casei (strain BL23) groL protein, His-tagged

Cat. No. groL-556L Lot. No. (See product label)

SPECIFICATION

Product Overview	Recombinant Lacticaseibacillus casei (strain BL23) groL protein(B3W9W7)(182-374aa), fused with C-terminal His tag, was expressed in E.coli.
Species	Lacticaseibacillus casei (strain BL23)
Source	E.coli
ProteinLength	182-374a.a.
Tag	His
Form	If the delivery form is liquid, the default storage buffer is Tris/PBS-based buffer, 5%-50% glycerol. If the delivery form is lyophilized powder, the buffer before lyophilization is Tris/PBS-based buffer, 6% Trehalose, pH 8.0.
Molecular Mass	27.9 kDa
Purity	Greater than 90% as determined by SDS-PAGE.
Storage	Store at -20°C/-80°C upon receipt, aliquoting is necessary for mutiple use. Avoid repeated freeze-thaw cycles.
Reconstitution	We recommend that this vial be briefly centrifuged prior to opening to bring the contents to the bottom. Please reconstitute protein in deionized sterile water to a

 Tel: 1-631-559-9269 1-516-512-3133

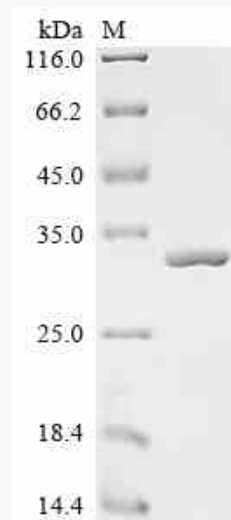
 Email: info@creative-biomart.com  Fax: 1-631-938-8127

 45-1 Ramsey Road, Shirley, NY 11967, USA

concentration of 0.1-1.0 mg/mL. We recommend to add 5-50% of glycerol (final concentration) and aliquot for long-term storage at -20°C/-80°C.

AA Sequence

DTELSVVEGMQFDRGYLSQYMVTDNDKMEADLDDPYILITDKKISNIQDILPLLQEIVQ
QGKALLIIADDVAGEALPTLVLNKIRGTFNVVAVKAPGFGDRRKAQLEDIATLTGGTVI
SSDLGLDLKDTKLEQLGRAGKVTVTKDNTTIVDGAGSKDAIAERVNIIKKQIDDTTSDF
DREKLQERLAKLAGGV

SDS-PAGE

 Tel: 1-631-559-9269 1-516-512-3133

 Email: info@creative-biomart.com  Fax: 1-631-938-8127

 45-1 Ramsey Road, Shirley, NY 11967, USA