

## Active Recombinant Zebrafish il1b protein, His-tagged

Cat. No. il1b-2298Z Lot. No. (See product label)

### SPECIFICATION

**Product Overview** Active Recombinant Zebrafish il1b protein(Q4KMF1)(1~273 aa), fused with N-terminal His tag, was expressed in E.coli.

**Species** Zebrafish

**Source** E.coli

**ProteinLength** 1-273 aa

**Form** Lyophilized from sterile PBS, pH7.4, containing 0.01% SKL, 1mM DTT, 5% Trehalose and Proclin300.

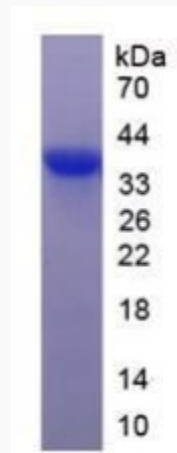
**Bio-activity** Interleukin 1 beta (IL-1 $\beta$ ) also known as leukocytic pyrogen, leukocytic endogenous mediator, mononuclear cell factor, lymphocyte activating factor and other names, is a member of the interleukin 1 family of cytokines. This cytokine is an important mediator of the inflammatory response, and is involved in a variety of cellular activities, including cell proliferation, differentiation, and apoptosis. It has been reported that IL-1 $\beta$  can induced IL-8 production in A549 cells. To test the bioactivity of recombinant zebrafish IL-1 $\beta$ , A549 cells were seeded into 24-well plate at a density of  $1 \times 10^5$  cells/mL, and allowed to attach overnight before treated with certain concentrations of recombinant zebrafish IL-1 $\beta$  for 48h and IL-8 levels in the cell supernatant were determined by ELISA (SEA080Hu). IL-8 levels in the cell supernatant of A549 cells increased significantly after stimulated with IL-1 $\beta$ , the EC50 was 16.86 ug/ml.

 Tel: 1-631-559-9269 1-516-512-3133

 Email: [info@creative-biomart.com](mailto:info@creative-biomart.com)  Fax: 1-631-938-8127

 45-1 Ramsey Road, Shirley, NY 11967, USA

<b>Molecular Mass</b>	34.1kDa
<b>Endotoxin</b>	<1.0EU per 1 $\mu$ g (determined by the LAL method).
<b>Purity</b>	> 90% as determined by SDS-PAGE.
<b>Storage</b>	Avoid repeated freeze/thaw cycles. Store at -20°C for 12 months. Aliquot and store at -80°C for 12 months.
<b>Reconstitution</b>	Reconstitute in 10mM PBS (pH7.4) to a concentration of 0.1-1.0 mg/mL. Do not vortex.

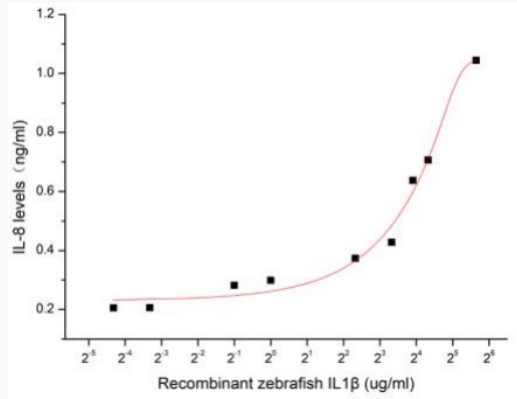
**SDS-PAGE**

 Tel: 1-631-559-9269 1-516-512-3133

 Email: [info@creative-biomart.com](mailto:info@creative-biomart.com)  Fax: 1-631-938-8127

 45-1 Ramsey Road, Shirley, NY 11967, USA

Activity



 Tel: 1-631-559-9269 1-516-512-3133

 Email: [info@creative-biomart.com](mailto:info@creative-biomart.com)  Fax: 1-631-938-8127

 45-1 Ramsey Road, Shirley, NY 11967, USA