

# Recombinant Streptococcus pneumoniae (strain P1031) Idh protein(1-328aa), His&Myc-tagged

Cat. No. Idh-7548S    Lot. No. (See product label)

## SPECIFICATION

|                         |   |
|-------------------------|---|
| <b>Product Overview</b> | Recombinant Streptococcus pneumoniae (strain P1031) Idh protein(C1CKW1)(1-328aa), fused with N-terminal His tag and C-terminal Myc tag, was expressed in E.coli.  |
| <b>Species</b>          | Streptococcus pneumoniae  |
| <b>Source</b>           | E.coli  |
| <b>ProteinLength</b>    | 1-328aa   |
| <b>Form</b>             | If the delivery form is liquid, the default storage buffer is Tris/PBS-based buffer, 5%-50% glycerol. If the delivery form is lyophilized powder, the buffer before lyophilization is Tris/PBS-based buffer, 6% Trehalose, pH 8.0.                |
| <b>Molecular Mass</b>   | 42.8 kDa  |
| <b>Purity</b>           | Greater than 90% as determined by SDS-PAGE.   |
| <b>Storage</b>          | Store at -20°C/-80°C upon receipt, aliquoting is necessary for mutiple use. Avoid repeated freeze-thaw cycles.  |
| <b>Reconstitution</b>   | We recommend that this vial be briefly centrifuged prior to opening to bring the contents to the bottom. Please reconstitute protein in deionized sterile water to a concentration of 0.1-1.0 mg/mL. We recommend to add 5-50% of glycerol (final |

 Tel: 1-631-559-9269    1-516-512-3133

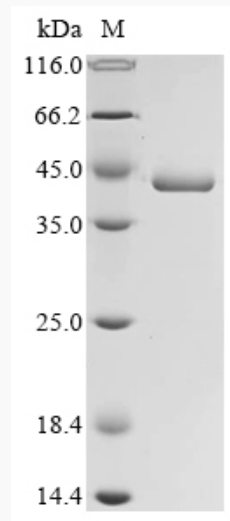
 Email: [info@creative-biomart.com](mailto:info@creative-biomart.com)     Fax: 1-631-938-8127

 45-1 Ramsey Road, Shirley, NY 11967, USA

concentration) and aliquot for long-term storage at -20°C/-80°C.

**AA Sequence**

MTSTKQHKKVILVGDGAVGSSYAFALVNQGIAQELGIIIPQLHEKAVGDALDLSHAL  
AFTSPKKIYAAQYSDCADADLVVITAGAPQKPGETRLDLVGKNLAINKSIVTQVVESG  
FKGIFLVAANPVDVLTYSTWKFSGFPKERVIGSGTSLDSARFRQALAEKLDVDARSV  
HAYIMGEHGDSEFAVWSHANIAGVNL EEFLKDTQNVQEAEELI EFGV RDAAYTIINK  
KGATYYGIAVALARITKAILDDENAVLPLSVFQEGQYGVENVFIGQPAVVG AHGIVRP  
VNIPLNDAETQKMQASAKELQAIIDEAWKNPEFQEASKN

**SDS-PAGE**

 Tel: 1-631-559-9269 1-516-512-3133

 Email: [info@creative-biomart.com](mailto:info@creative-biomart.com)  Fax: 1-631-938-8127

 45-1 Ramsey Road, Shirley, NY 11967, USA