

Recombinant *Lactococcus lactis* IspA Full Length Transmembrane protein, His-tagged(Nanodisc)

Cat. No. IspA-4366L Lot. No. (See product label)

SPECIFICATION

Product Overview	Recombinant <i>Lactococcus lactis</i> IspA protein(A0A089ZE57)(1-150aa), fused to C-terminal His tag, was expressed in <i>E. coli</i> .
Species	<i>Lactococcus lactis</i>
Source	<i>E. coli</i>
ProteinLength	1-150aa
Form	If the delivery form is liquid, the default storage buffer is Tris/PBS-based buffer, 5%-50% glycerol. If the delivery form is lyophilized powder, the buffer before lyophilization is Tris/PBS-based buffer, 6% Trehalose, pH 8.0.
Molecular Mass	19.9 kDa
AA Sequence	MKKLLSLVIIVVGIVADQIFKNWIVANIQLGDTEKIWPNVLSLTYIKNDGAAWSSFSGQ QWFFLVLTPIVLVVALWFLWKKMAQNWYFIGLTLIAGALGNFIDRIRQGFVVDMFQT EFINFPIFNADILLSVGFVLLFIAILTDKETK
Purity	Greater than 85% as determined by SDS-PAGE.
Storage	Store at -20°C/-80°C upon receipt, aliquoting is necessary for mutiple use. Avoid repeated freeze-thaw cycles.

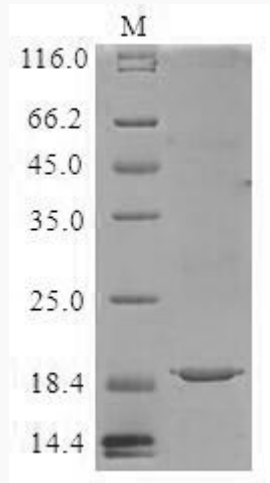
 Tel: 1-631-559-9269 1-516-512-3133

 Email: info@creative-biomart.com  Fax: 1-631-938-8127

 45-1 Ramsey Road, Shirley, NY 11967, USA

Reconstitution

Please reconstitute protein in deionized sterile water to a concentration of 0.1-1.0 mg/mL. We recommend to add 5-50% of glycerol (final concentration) and aliquot for long-term storage at -20°C/-80°C. Our default final concentration of glycerol is 50%.

SDS-PAGE

 Tel: 1-631-559-9269 1-516-512-3133

 Email: info@creative-biomart.com  Fax: 1-631-938-8127

 45-1 Ramsey Road, Shirley, NY 11967, USA