

# Recombinant African clawed frog mmp21 protein, His&Myc-tagged

**Cat. No.** mmp21-5432A    **Lot. No.** (See product label)

## SPECIFICATION

<b>Product Overview</b>	Recombinant African clawed frog mmp21 protein(O93470)(181-604aa), fused with N-terminal His tag and C-terminal Myc tag, was expressed in E.coli.
<b>Species</b>	African clawed frog
<b>Source</b>	E.coli
<b>ProteinLength</b>	181-604aa
<b>Form</b>	If the delivery form is liquid, the default storage buffer is Tris/PBS-based buffer, 5%-50% glycerol. If the delivery form is lyophilized powder, the buffer before lyophilization is Tris/PBS-based buffer, 6% Trehalose, pH 8.0.
<b>Molecular Mass</b>	57.2 kDa
<b>Purity</b>	Greater than 85% as determined by SDS-PAGE.
<b>Storage</b>	Store at -20°C/-80°C upon receipt, aliquoting is necessary for mutiple use. Avoid repeated freeze-thaw cycles.
<b>Reconstitution</b>	We recommend that this vial be briefly centrifuged prior to opening to bring the contents to the bottom. Please reconstitute protein in deionized sterile water to a concentration of 0.1-1.0 mg/mL.We recommend to add 5-50% of glycerol (final concentration) and aliquot for long-term storage at -20°C/-80°C.

 Tel: 1-631-559-9269    1-516-512-3133

 Email: [info@creative-biomart.com](mailto:info@creative-biomart.com)     Fax: 1-631-938-8127

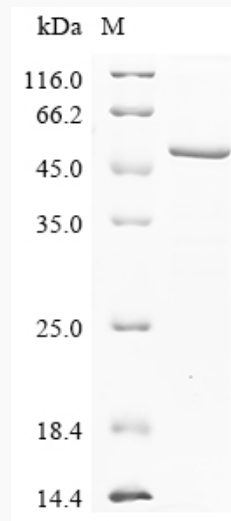
 45-1 Ramsey Road, Shirley, NY 11967, USA



**AA Sequence**

FLDMLMYSNKYREEQEALQKSTGKVFTKLLKWRMIGEGYSNQLSINEQRYVFRLA  
FRMWSEVMPLDFEEDNTSPLSQIDIKLGFGRGRHLGCSRAFDGSGQEFHAHAWFLG  
DIHFDDDEHFTAPSSEHGISLLKVA AHEIGHVLGLSHIHRVGSIMQPNYIPQDSGFELD  
LSDRRAIQNLYGSCGPFDTAFDWIYKEKNQYGELVVRYNTYFFRNSWYWMYENR  
SNRTRYGDPLAIANGWHGIPVQNIDAFVHVWTWTRDASYFFKGTQYWRYDSENDK  
AYAEDAQGKSYPRLISEGFPGIPSPINAAYFDRRRQYIYFFRDSQVFAFDINRNRVAP  
DFPKRILDFFPAVAANNHPKGNIDVAYYSYTYSSLFLFKGKEFWKVVSDKDRRQNPS  
LPYNGLFPRRAISQQWFDICNVHPSLLKI

**SDS-PAGE**



Tel: 1-631-559-9269 1-516-512-3133

Email: [info@creative-biomart.com](mailto:info@creative-biomart.com) Fax: 1-631-938-8127

45-1 Ramsey Road, Shirley, NY 11967, USA