

## Recombinant Rat mt-Co2 Protein, His-tagged

Cat. No. mt-Co2-1141R Lot. No. (See product label)

### SPECIFICATION

<b>Product Overview</b>	Recombinant Rat mt-Co2 Protein (Ile83-Ile227) with His tag was expressed in E. coli.
<b>Species</b>	Rat
<b>Source</b>	E.coli
<b>ProteinLength</b>	Ile83-Ile227
<b>Description</b>	Predicted to enable copper ion binding activity. Predicted to contribute to cytochrome-c oxidase activity. Involved in several processes, including lactation; positive regulation of cellular biosynthetic process; and positive regulation of necrotic cell death. Predicted to be located in mitochondrial inner membrane. Predicted to be part of respiratory chain complex IV. Biomarker of colorectal carcinoma and type 2 diabetes mellitus. Orthologous to several human genes including MTCO2P12 (MT-CO2 pseudogene 12).
<b>Form</b>	Freeze-dried powder
<b>Molecular Mass</b>	Predicted Molecular Mass: 20.4 kDa; Accurate Molecular Mass: 22 kDa
<b>Purity</b>	> 90%
<b>Applications</b>	Positive Control; Immunogen; SDS-PAGE; WB.
<b>Stability</b>	The thermal stability is described by the loss rate. The loss rate was determined by

 Tel: 1-631-559-9269 1-516-512-3133

 Email: [info@creative-biomart.com](mailto:info@creative-biomart.com)  Fax: 1-631-938-8127

 45-1 Ramsey Road, Shirley, NY 11967, USA

accelerated thermal degradation test, that is, incubate the protein at 37 centigrade for 48h, and no obvious degradation and precipitation were observed. The loss rate is less than 5% within the expiration date under appropriate storage condition.

**Storage**

Avoid repeated freeze/thaw cycles. Store at 2-8 centigrade for one month. Aliquot and store at -80 centigrade for 12 months.

**Storage Buffer**

20mM Tris, 150mM NaCl, pH8.0, containing 1mM EDTA, 1mM DTT, 0.01% SKL, 5% Trehalose and Proclin300.

**Reconstitution**

Reconstitute in 20mM Tris, 150mM NaCl (pH8.0) to a concentration of 0.1-1.0 mg/mL. Do not vortex.

## GENE INFORMATION

**Gene Name**

mt-Co2 cytochrome c oxidase II, mitochondrial [ *Rattus norvegicus* (Norway rat) ]

**Official Symbol**

mt-Co2

**Synonyms**

mt-Co2; cytochrome c oxidase II, mitochondrial; COII; COX2; cytochrome c oxidase subunit 2; cytochrome c oxidase subunit II

**Gene ID**

26198

**Protein Refseq**


YP\_665632

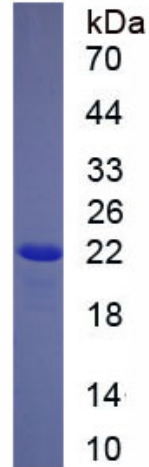
**UniProt ID**

P00406

 Tel: 1-631-559-9269 1-516-512-3133

 Email: [info@creative-biomart.com](mailto:info@creative-biomart.com)  Fax: 1-631-938-8127

 45-1 Ramsey Road, Shirley, NY 11967, USA



Tel: 1-631-559-9269 1-516-512-3133

Email: [info@creative-biomart.com](mailto:info@creative-biomart.com) Fax: 1-631-938-8127

45-1 Ramsey Road, Shirley, NY 11967, USA