

# Recombinant *Salmonella typhimurium* prgl protein, MBP&His-Avi-tagged, Biotinylated

**Cat. No.** prgl-4532S    **Lot. No.** (See product label)

## SPECIFICATION

<b>Product Overview</b>	Biotinylated Recombinant <i>Salmonella typhimurium</i> (strain LT2 / SGSC1412 / ATCC 700720) prgl protein(P41784)(1-80aa), fused with N-terminal MBP tag and C-terminal His and Avi tag, was expressed in <i>E.coli</i> .
<b>Species</b>	<i>Salmonella typhimurium</i>
<b>Source</b>	<i>E.coli</i>
<b>ProteinLength</b>	1-80aa
<b>Conjugation/Label</b>	Biotin
<b>Form</b>	If the delivery form is liquid, the default storage buffer is Tris/PBS-based buffer, 5%-50% glycerol. If the delivery form is lyophilized powder, the buffer before lyophilization is Tris/PBS-based buffer, 6% Trehalose, pH 8.0.
<b>Molecular Mass</b>	56.6 kDa
<b>Purity</b>	Greater than 90% as determined by SDS-PAGE.
<b>Storage</b>	Store at -20°C/-80°C upon receipt, aliquoting is necessary for mutiple use. Avoid repeated freeze-thaw cycles.
<b>Reconstitution</b>	We recommend that this vial be briefly centrifuged prior to opening to bring the

 Tel: 1-631-559-9269    1-516-512-3133

 Email: [info@creative-biomart.com](mailto:info@creative-biomart.com)     Fax: 1-631-938-8127

 45-1 Ramsey Road, Shirley, NY 11967, USA

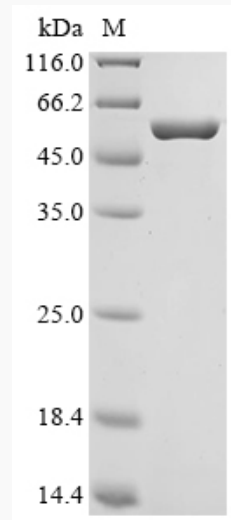
contents to the bottom. Please reconstitute protein in deionized sterile water to a concentration of 0.1-1.0 mg/mL. We recommend to add 5-50% of glycerol (final concentration) and aliquot for long-term storage at -20°C/-80°C.

**AA Sequence**

MATPWSGYLDDVSAKFDTGVDNLQTQVTEALDKLAAKPSDPALLAAYQSKLSEYNL  
YRNAQSNTVKVFKDIDAAIIQNFR

**Conjugation**

Biotin

**SDS-PAGE**

 Tel: 1-631-559-9269 1-516-512-3133

 Email: [info@creative-biomart.com](mailto:info@creative-biomart.com)  Fax: 1-631-938-8127

 45-1 Ramsey Road, Shirley, NY 11967, USA