

# Recombinant Escherichia coli (strain K12) rho protein, His-tagged

**Cat. No.** rho-5301E    **Lot. No.** (See product label)

## SPECIFICATION

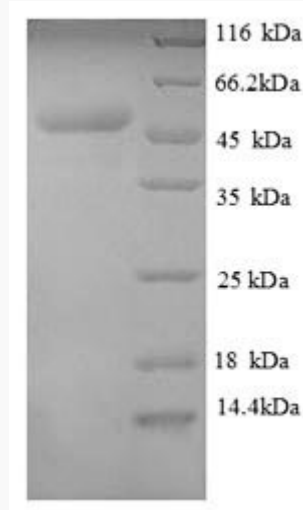
|                         |   |
|-------------------------|---|
| <b>Product Overview</b> | Recombinant Escherichia coli (strain K12) rho protein(P0AG30)(1-419aa), fused to N-terminal His tag, was expressed in E. coli.  |
| <b>Species</b>          | E.coli  |
| <b>Source</b>           | E.coli  |
| <b>ProteinLength</b>    | 1-419aa   |
| <b>Form</b>             | If the delivery form is liquid, the default storage buffer is Tris/PBS-based buffer, 5%-50% glycerol.<br>If the delivery form is lyophilized powder, the buffer before lyophilization is Tris/PBS-based buffer, 6% Trehalose, pH 8.0.                         |
| <b>Molecular Mass</b>   | 51 kDa  |
| <b>Purity</b>           | Greater than 90% as determined by SDS-PAGE.   |
| <b>Storage</b>          | Store at -20°C/-80°C upon receipt, aliquoting is necessary for mutiple use. Avoid repeated freeze-thaw cycles.  |
| <b>Reconstitution</b>   | Please reconstitute protein in deionized sterile water to a concentration of 0.1-1.0 mg/mL. We recommend to add 5-50% of glycerol (final concentration) and aliquot for long-term storage at -20°C/-80°C. Our default final concentration of glycerol is 50%. |

 Tel: 1-631-559-9269    1-516-512-3133

 Email: [info@creative-biomart.com](mailto:info@creative-biomart.com)     Fax: 1-631-938-8127

 45-1 Ramsey Road, Shirley, NY 11967, USA

**SDS-PAGE**



 Tel: 1-631-559-9269 1-516-512-3133

 Email: [info@creative-biomart.com](mailto:info@creative-biomart.com)  Fax: 1-631-938-8127

 45-1 Ramsey Road, Shirley, NY 11967, USA