

Recombinant Escherichia coli (strain K12) rpsA protein, His-tagged

Cat. No. rpsA-4639H **Lot. No.** (See product label)

SPECIFICATION

Product Overview	Recombinant Escherichia coli (strain K12) rpsA protein(P0AG67)(1-557 aa), fused with C-terminal His tag, was expressed in E.coli.
Species	E.coli
Source	E.coli
ProteinLength	1-557 aa
Form	For liquid formulations, the standard storage buffer consists of a Tris or PBS based solution supplemented with 5-50% glycerol. When provided as lyophilized powder, the product undergoes freeze-drying from a Tris- or PBS-based formulation containing 6% trehalose, adjusted to pH 8.0 prior to the lyophilization process.
Molecular Mass	68.1 kDa
AASequence	MTESFAQLFEEESLKEIETRPGSIVRGVVVAIDKDVLVDAGLKSESAIPAEQFKNAQG ELEIQVGDEVDVALDAVEDGFGGETLLSREKAKRHEAWITLEKAYEDAETVTGVINGK VKGGFTVELNGIRAFPLPGSLVDVRPVRDTLHLEGKELEFKVIKLDQKRNNVVSRRA VIESENSAERDQLLENLQEGMEVKGIVKNLTDYGAFVDLGGVDGLLHITDMAWKRVK HPSEIVNVGDEITVKVLKFDRETRVSLGLKQLGEDPWVAIAKRYPEGTKLTGRVTN LTDYGCFVEIEEGVEGLVHVSEMDWTNKNIHPSKVNVNVDVVEVMVLDIDEERRRIS LGLKQCKANPWQQFAETHNKGDRVEGKIKSITDFGIFIGLDGGIDGLVHLSDISWNVA GEEAVREYKKGDEIAAVVLQVDAERERISLGVKQLAEDPFNNWVALNKKGAIVTGKV

 Tel: 1-631-559-9269 1-516-512-3133

 Email: info@creative-biomart.com  Fax: 1-631-938-8127

 45-1 Ramsey Road, Shirley, NY 11967, USA

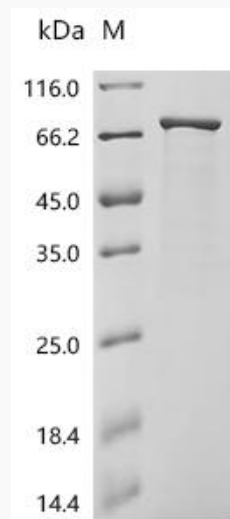
TAVDAKGATVELADGVEGYLRASEASRDRVEDATLVLSVGDEVEAKFTGVDRKNRA
ISLSVRAKDEADEKDAIATV NKQEDANFSNNAMAEAFKAAKGE

Purity Greater than 85% as determined by SDS-PAGE.

Storage Store at -20°C/-80°C upon receipt, aliquoting is necessary for mutiple use. Avoid repeated freeze-thaw cycles.

Reconstitution Please reconstitute protein indeionized sterile water to a concentration of 0.1-1.0 mg/mL. Aliquot for long-term storage at -80°C.

SDS-PAGE



Tel: 1-631-559-9269 1-516-512-3133

Email: info@creative-biomart.com Fax: 1-631-938-8127

45-1 Ramsey Road, Shirley, NY 11967, USA