

Recombinant *Drosophila melanogaster* tau Protein (Full length)

Cat. No. tau-38D Lot. No. (See product label)

SPECIFICATION

Product Overview	Recombinant full-length <i>Drosophila melanogaster</i> tag-free Tau-361 was expressed in <i>E. coli</i> cells.
Species	<i>Drosophila melanogaster</i>
Source	<i>E. coli</i>
ProteinLength	Full Length
Description	<i>Drosophila melanogaster</i> Tau-361 and human Tau-441 are homologs with amino acid sequence similarities and share functional properties in microtubule binding and stability. Tau-361 exhibits 46% identity and 66% similarity with human Tau-441. Tau-361 contains five putative microtubule binding domain (MTBD) repeats, but does not contain the N-terminal MTBD repeats found in human Tau-441. <i>Drosophila melanogaster</i> is a widely used powerful model organism utilized to investigate in vivo toxicity of proteins linked to neurodegenerative diseases, particularly Alzheimer's disease where the accumulation of post-translationally modified Tau species leads to the formation of intracellular neurofibrillary tangles and subsequent neuronal death.
Molecular Mass	Observed MW: ~53 kDa. Calculated MW: ~41 kDa.
Purity	The purity of Tau-361 was determined to be > 70 % by densitometry.

 Tel: 1-631-559-9269 1-516-512-3133

 Email: info@creative-biomart.com  Fax: 1-631-938-8127

 45-1 Ramsey Road, Shirley, NY 11967, USA

Stability	One year at -70 centigrade from date of shipment.
Storage	Store product at -70 centigrade. For optimal storage, aliquot target into smaller quantities after centrifugation and store at recommended temperature. For most favorable performance, avoid repeated handling and multiple freeze/thaw cycles.
Concentration	0.2 µg/µL
Storage Buffer	Recombinant protein stored in 50mM Tris-HCl, pH 7.5, 150mM NaCl, 0,25mM DTT, 25% glycerol.
Shipping	Dry ice
GENE INFORMATION	
Gene Name	tau [<i>Drosophila melanogaster</i> (fruit fly)]
Official Symbol	tau
Synonyms	tau; Dmel_CG31057; Dmel_CG31058; Dmel_CG34294; BcDNA:RE16764; CG12881; CG31057; CG31058; CG34294; CG45110; CG5606; d-tau; Dmel\CG45110; dtau; dTau; dTAU; Tau; tau; CG45110-PA; CG45110-PB; CG45110-PC; CG45110-PE; CG45110-PF; CG45110-PG; CG45110-PH; CG45110-PI; CG45110-PJ; CG45110-PK; CG45110-PL; CG45110-PM; CG45110-PN; CG45110-PO; tau-PA; tau-PB; tau-PC; tau-PE; tau-PF; tau-PG; tau-PH; tau-PI; tau-PJ; tau-PK; tau-PL; tau-PM; tau-PN; tau-PO
Gene ID	326116
mRNA Refseq	NM_143318

 Tel: 1-631-559-9269 1-516-512-3133

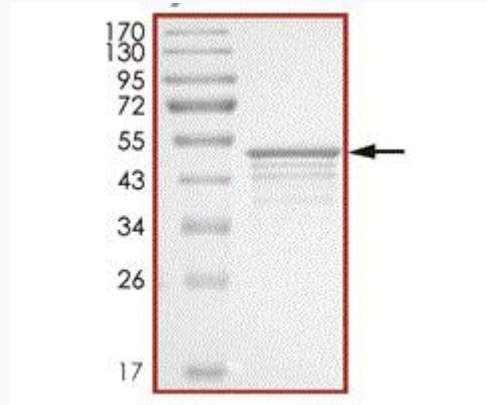
 Email: info@creative-biomart.com  Fax: 1-631-938-8127

 45-1 Ramsey Road, Shirley, NY 11967, USA

Protein Refseq NP_651575

UniProt ID Q9VB13

Purity



 Tel: 1-631-559-9269 1-516-512-3133

 Email: info@creative-biomart.com  Fax: 1-631-938-8127

 45-1 Ramsey Road, Shirley, NY 11967, USA