

## Recombinant *Clostridioides difficile* (*Peptoclostridium difficile*) tcdB Protein (Gly1834-Glu2053), N-SUMO tagged

Cat. No. tcdB-1451C Lot. No. (See product label)

### SPECIFICATION

<b>Product Overview</b>	Recombinant <i>C. difficile</i> toxB (Gly1834-Glu2053) fused with the N-terminal SUMO tag was expressed in <i>E. coli</i> .
<b>Species</b>	<i>Clostridioides difficile</i>
<b>Source</b>	<i>E. coli</i>
<b>ProteinLength</b>	Gly1834-Glu2053
<b>Description</b>	<p><i>Clostridium difficile</i> is the leading cause of hospital-acquired diarrhea, known as <i>C. difficile</i>-associated disease. The estimated number of cases of <i>C. difficile</i>-associated disease exceeds 250, 000 per year, with health care costs approaching US \$1 billion annually. The major virulence factors produced by <i>C. difficile</i> are two toxins, TcdA and TcdB. Both toxins can monoglucosylate and inactivate Rho family small GTPases within target cells, leading to disruption of vital signaling pathways in the cell, subsequently causing diarrhea, inflammation, and damage of colonic mucosa. Both toxins have a similar tripartite structure comprised of an N-terminal glucosyltransferase domain, a C-terminal receptor binding domain, and a small hydrophobic span possibly involved in toxin translocation. Our recombinant TcdB consists of the enzymatic domain. Both TcdA and TcdB also have potassium-dependent UDP-Glc hydrolase activity, which is essentially glucosyltransferase activity with water as the acceptor molecule. Under same conditions, UDP-glucose hydrolysis by TcdB occurs at a rate about 5-fold greater</p>

 Tel: 1-631-559-9269 1-516-512-3133

 Email: [info@creative-biomart.com](mailto:info@creative-biomart.com)  Fax: 1-631-938-8127

 45-1 Ramsey Road, Shirley, NY 11967, USA

	than that of TcdA.
<b>Form</b>	Lyophilized powder/frozen liquid
<b>Molecular Mass</b>	43.1 kDa
<b>Purity</b>	>90% as determined by SDS-PAGE.
<b>Notes</b>	For research use only.
<b>Storage</b>	Use a manual defrost freezer and avoid repeated freeze thaw cycles. Store at 2 to 8 centigrade for one week. Store at -20 to -80 centigrade for twelve months from the date of receipt.
<b>Storage Buffer</b>	Supplied as solution form in PBS or lyophilized from PBS.
<b>Reconstitution</b>	Reconstitute in sterile water for a stock solution.
<b>Shipping</b>	They are shipped out with dry ice/blue ice unless customers require otherwise.
<b>GENE INFORMATION</b>	
<b>Official Symbol</b>	tcdB
<b>Synonyms</b>	tcdB; Toxin B; EC:3.4.22.-; Glucosyltransferase TcdB; TcdB; toxB
<b>UniProt ID</b>	<a href="#">P18177</a>

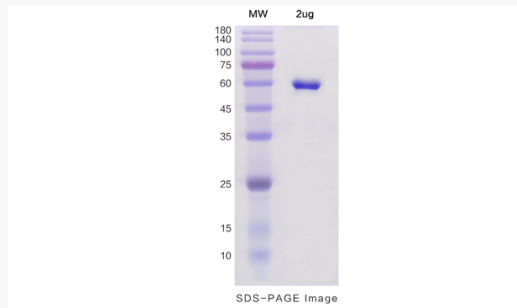
 Tel: 1-631-559-9269 1-516-512-3133

 Email: [info@creative-biomart.com](mailto:info@creative-biomart.com)  Fax: 1-631-938-8127

 45-1 Ramsey Road, Shirley, NY 11967, USA



SDS-PAGE



Tel: 1-631-559-9269 1-516-512-3133

Email: [info@creative-biomart.com](mailto:info@creative-biomart.com) Fax: 1-631-938-8127

45-1 Ramsey Road, Shirley, NY 11967, USA